

Engine & Equipment Application

1004.40/40T

TURBOCHARGED or NATURALLY ASPIRATED

4 Cyl, Lip Seal

Kits include both rear seals

Bore: 3.937 in
100 mm

ENGINES BUILDS

4.401	AJ
T4.401	AK
CCW4.401	AM
N4.401	AP
TN4.401	AQ

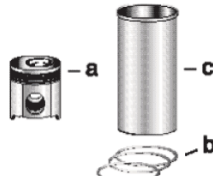
APPLICATIONS:

JCB

Backhoe	(AK50628)
Shovel Loader	(AM50610)

MF AGRICULTURAL

Tractor	(AK31299)
---------	-----------



1) Engine O/H Kit

Piston-Liner Kit

Main Bearing Set

Con Rod Bearing Set

Thrust Washer Set

2) Basic Engine Kit

PCK5762
Consists of:
a) [PU5LP0057](#)
b) [P4181A033](#)
c) [P3135X062](#) (1)
4 Per Engine

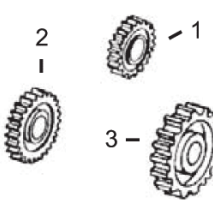
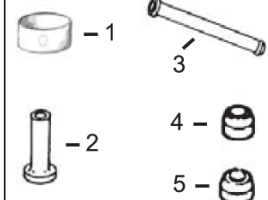
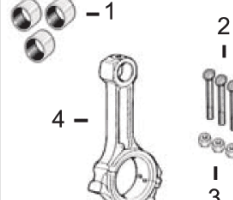
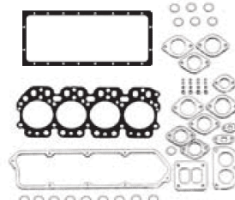
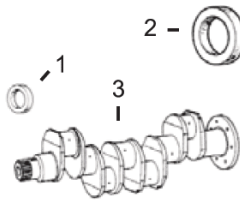
[P81558](#) Std.
[P81558A](#) .010
[P81558B](#) .020
[P81558C](#) .030
Set of 5 Pairs

[PU5ME0006](#) Std. (6)
[PU5ME0006A](#) .010
[PU5ME0006B](#) .020
[PU5ME0006C](#) .030
Set of 4 Pairs

[P31137551/61](#)
Set of 2 Pairs

**1) [POK473/45](#)
[POK473/30](#)**

2) [PBK473](#)



**1) Front Seal
2) Rear Seal**

**1) Top Gasket Set
2) Bottom Gasket**

**1) Bush, Con Rod
2) Bolt, Con Rod
3) Nut, Con Rod
4) Con Rod**

1) Bushing, Cam
2) Tappet
3) Push Rod
4) Seal, Exhaust Valve
5) Seal, Intake Valve

1) Crankshaft Gear
2) Camshaft Gear
3) Idler Gear

3) Crankshaft Kit

3) Head Gasket
4) Valve Cover Gsk

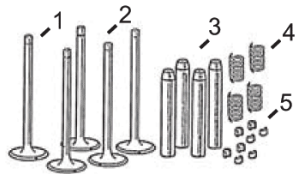
1) [P2418F436](#)
2) [P2418F475](#) (3)
[P2418F701](#) (4)
3) [PZZ90212](#) (7)
[PZZ90226](#) (7)

1) [PU5LT0202](#)
2) [PU5LB1171](#) (9)
3) [P3681E025](#)
4) [P3681A049](#)

1) [P3112E011](#) x4
2) [P32762144](#) x8
[P3212V003](#) x8 (5)
3) [P33221328](#) x8
4) [P4115C314](#) (8)

1) [P31134132](#) x1
2) [P31434163](#)
3) [P31434307](#)
4) [P2418M505](#) x4
5) [P2418M506](#) x4

1) N/A
2) [P3117L023](#)
3) N/A



Valve Train Kit
a) 45° Angle
b) 30° Angle

1) Valve, Intake
2) Valve, Exhaust
a) 45° Angle b) 30° Angle
1a) [P3142D041](#) x4
b) [P3142L081](#) x4
2a) [P3142D031](#) x4
b) [P3142D051](#) x4

3) Guide, Valve
a) Intake
b) Exhaust

4) Spring, Valve

5) Lock, Valve

a) [PVTK423](#)
b) [PVTK424](#)

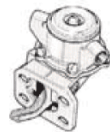
a) [P3313A012](#) x4
b) [P3318A705](#) x4

4) [P3174P409](#) x8

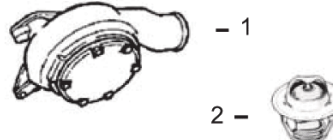
5) [P3142W004](#) x16



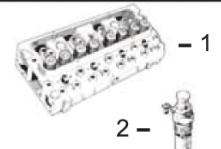
1) Oil Pump
2) Oil Cooler



Lift Pump



1) Water Pump
2) Thermostat



1) Cylinder Head
2) Glowplug

1) [P4132F056](#)
[P4132F041](#) (2)
2) [P2486A219](#)
[P2486A222](#)

[P2641A067](#)

1) [PU5MW0192](#)
2) [P2485C036](#)

1) N/A
2) [P2666108](#)
(Bayonet Fitting)

(1) Flanged, Semi Finished Liner available, [P3135X063](#).

(2) Use in engines with Balancer Units.

(3) To ESN U176356H.

(4) From ESN U176357H.

(5) Use with Fractured Split Con Rod

(6) Use Con Rod Bearing Set, [PU5ME0013](#), from ESN U284278J. Order [POK473/45NB](#) or /30NB or [PBK473NB](#) and nominate the bearings.

(7) [PZZ90212](#) To ESN U284277J and [PZZ90226](#) From ESN U284278J.

(8) Grade J, Color Coded Green.

(9) May use Bottom Gasket Set [PU5I B1310](#)