

**Engine & Equipment  
Application**

**1006.60T**

**TURBOCHARGED or  
NATURALLY ASPIRATED**

**6 Cyl, Lip Seal**

**Kits include both rear seals**

Bore: 3.9370 in  
100.00 mm

**ENGINES BUILDS**

6.601	YG
T6.601	YH
CCW6.601	YK
CCA6.601	YJ

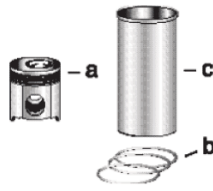
**APPLICATIONS:**

**Mc CORMICK**

MTX 110	(YH50918)
MTX 125	(YH50919)
MTX 140	(YH50920)
MTX 155	(YK50921)
MTX 170	(YJ51192)

**MF AGRICULTURAL**

6180	(YH31310)
------	-----------



**1) Engine O/H  
Kit**

**Piston-Liner Kit**

**Main Bearing  
Set**

**Con Rod Bearing  
Set**

**Thrust Washer  
Set**

**2) Basic Engine  
Kit**

**PCK5762**  
Consists of:  
a) [PU5LP0057](#)  
b) [P4181A033](#)  
c) [P3135X062](#) (1)  
**6 Per Engine**

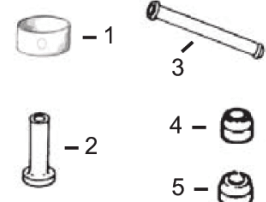
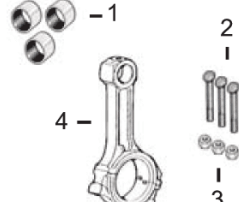
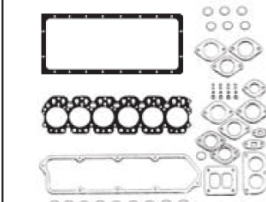
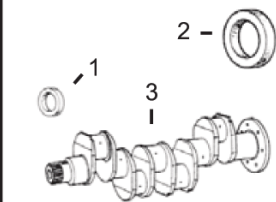
[PU5MB0030](#) Std.  
[PU5MB0030A](#) .010  
[PU5MB0030B](#) .020  
[PU5MB0030C](#) .030  
**Set of 7 Pairs**

[PU5ME0003](#) Std. (5)  
[PU5ME0003A](#) .010  
[PU5ME0003B](#) .020  
[PU5ME0003C](#) .030  
**Set of 6 Pairs**

[P31137551/61](#)  
**Set of 2 Pairs**

**1) [POK693/45](#)  
[POK693/30](#)**

**2) [PBK693](#)**



**1) Front Seal  
2) Rear Seal**

**1) Top Gasket Set  
2) Bottom Gasket**

**1) Bush, Con Rod  
2) Bolt, Con Rod  
3) Nut, Con Rod**

**1) Bushing, Cam**  
2) Tappet  
3) Push Rod  
4) Seal, Exhaust Valve  
5) Seal, Intake Valve

**3) Crankshaft Kit**

**3) Head Gasket**

**4) Con Rod**

1) [P2418F436](#)  
2) [P2418F475](#) (2)  
[P2418F701](#) (3)  
3) [PZZ90085](#)  
[PZZ90229](#) (7)

1) [PU5LT1300](#)  
2) [PU5LB1301](#)  
3) [P3681H205](#)

1) [P3112E011](#) x6  
2) [P32762144](#) x12  
[P3212V003](#) x12 (4)  
3) [P33221328](#) x12  
4) [P4115C314](#) (6)

1) [P31134132](#) x1  
2) [P31434163](#)  
3) [P31434307](#)  
4) [P2418M505](#) x6  
5) [P2418M506](#) x6

**Valve Train Kit**  
a) 45° Angle  
b) 30° Angle

1) Valve, Intake  
2) Valve, Exhaust  
a) 45° Angle b) 30° Angle

3) Guide, Valve  
a) Intake  
b) Exhaust

4) Spring, Valve

5) Lock, Valve

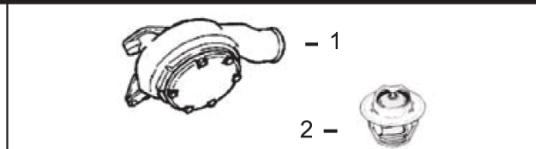
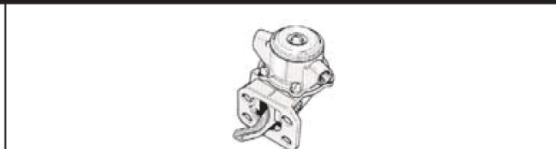
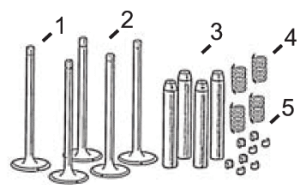
a) [PVTK618](#)  
b) [PVTK619](#)

1a) [P3142D041](#) x6  
b) [P3142L081](#) x6  
2a) [P3142D031](#) x6  
b) [P3142D051](#) x6

a) [P3313A012](#) x6  
b) [P3318A705](#) x6

4) [P3174P409](#) x12

5) [P3142W004](#) x24



1) Oil Pump  
2) Oil Cooler

Lift Pump

1) Water Pump  
2) Thermostat

1) [P4132F057](#)  
2) [P2486A992](#)  
[P2486A993](#)

[P2641729](#)

1) [PU5MW0192](#)  
2) [P2485C036](#)

(1) Flanged, Semi Finished Liner available, [P3135X063](#).

(2) To ESN U764751H.

(3) From ESN U764752H.

(4) Use with Fractured Split Con Rod

(5) Use Con Rod Bearing Set, [PU5ME0025](#), from ESN U801518J. For engine kit with these bearings, order [POK693/45NB](#) or /30NB or [PBK693NB](#) and nominate the brg.

(6) Grade J, Color Coded Green.

(7) Kit Includes Con Rod Bearing Set [PU5ME0025](#)