

**Engine & Equipment
Application**

1104D - 44T
(NL)

1104D - 44TA
(NM)

TURBOCHARGED

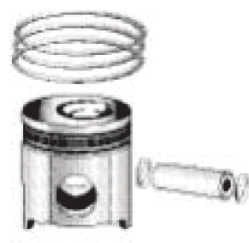
Bore: 4.133 in
105.00 mm

Stroke: 5.00 in
127.00 mm

Displacement: 269 in³
4.4 Liter

APPLICATIONS:

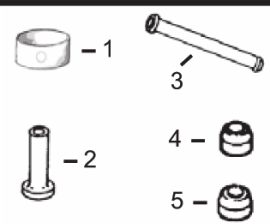
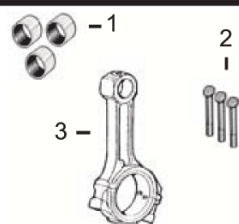
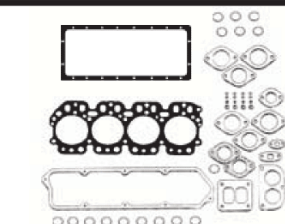
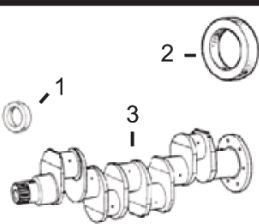
Backhoe Loaders
Excavators
Forklifts
MF5425
Telehandlers
Skid Steer Loaders
Pump Sets
Woodchippers
Wheel Loaders



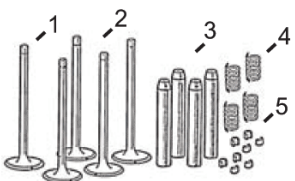
1) Engine O/H Kit	Piston & Ring Kit	Main Bearing Set	Con Rod Bearing Set	Thrust Washer Set
2) Basic Kit	PU5PR0062 Std.	PU5MB0033 Std.	PU5ME0034 Std.	P31137551/61
1) POK512 Std.	4 Per Engine	Set of 5 Pairs	Set of 4 Pairs	Set of 2 Pairs
POK513 0.50				
POK514 1.00				
2) PBK512 Std.	PU5PR0062B 0.50	PU5MB0033A .010	PU5ME0034A .010	
PBK513 0.50	PU5PR0062D 1.00	PU5MB0033B .020	PU5ME0034B .020	
PBK514 1.00		PU5MB0033C .030	PU5ME0034C .030	

* Piston Kit consists of:

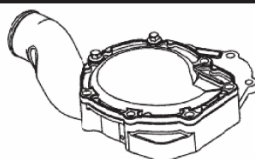
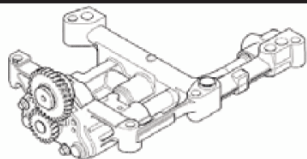
- | | | | |
|------------------|-----------------|--------------------------------|-------------------|
| 1) 1 X PMXFP062 | Piston Std, | 1 X PUPRK0005 | Ring Set Std. |
| 2) 1 X PMXFP062B | Piston 0.50 mm, | 1 X PUPRK0005B | Ring Set 0.50 mm. |
| 3) 1 X PMXFP062D | Piston 1.00 mm, | 1 X PUPRK0005D | Ring Set 1.00 mm. |



1) Front Seal 2) Rear Seal	1) Top Gasket Set 2) Bottom Gasket	1) Bush, Con Rod 2) Bolt, Con Rod	1) Bushing, Cam
3) Crankshaft Kit	3) Head Gasket 4) Valve Cover Gasket 5) Oil Pan Gasket	3) Con Rod Kit	2) Tappet 3) Push Rod 4) Seal, Exhaust Valve 5) Seal, Intake Valve
1) P2418F436 2) P2418F704 3) PZZ90239 (3)	1) PU5LT0357 2) PU5LB0382 3) P3681E051 4) P3681A055 5) P3681K037	1) P3112A005 x4 (3) 2) P3212V003 x8 (3) 3) P4115C314 (2) (3)	1) P3112D071 x1 2) P3142U061 3) P3142V011 4) P2418M517 x4 5) P2418M519 x4



Valve Train Kit	1) Valve, Intake 2) Valve, Exhaust	3) Guide, Valve (Intake & Exhaust)	4) Spring, Valve	5) Lock, Valve
PVTK426	1) P3142H101 x4 2) P3142A171 x4	3) P3313A012 x8	4) P3174A031 x8	5) P2714A002 x16



Oil Pump

Water Pump

Water Pump Gasket

[P4132F071](#) (1)

[PU5MW0208](#)

[P3682A011](#)

(1) Not to be used on engines with balancer units.

(2) Grade J, Color Coded Green.

(3) To ESN U056074T