

300 Series

Engine & Equipment
Model

3.152

154,766 >

O'rings on Block

3 Cyl

Bore: 3.86 in
98 mm
Pin Ø: 1.185 in
30 mm

Block (m):

R53240, R55100,
R72967, T32339

Con Rod (m):

T20007, R81410

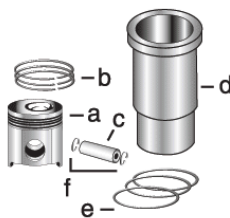
APPLICATIONS:

AGRICULTURAL

820
830
1020
1030

CONSTRUCTION

300
300A
300B
301
301A
350A/B
380

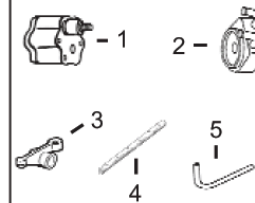
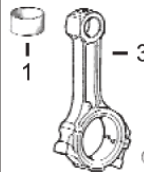
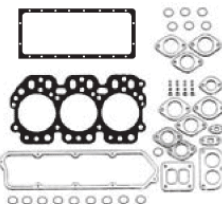
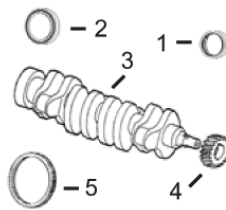


1) Engine O/H Kit	Piston-Liner Kit	Main Bearing	Thrust Bearing	Con Rod Bearing
-------------------	------------------	--------------	----------------	-----------------

2) Engine I/F Kit	TAR71591 Consists of:	TRE27352 Std.	TAT21139 Std.	TRE27348 Std.
-------------------	--	-------------------------------	-------------------------------	-------------------------------

1) TOK3591	a) TT23481	TRE27353 .010	TAT21132 .010	TRE27349 .010
2) TIK3591	b) TAR70633	TRE27360 .020	TAT21134 .020	TRE27358 .020
	c) TT23482	TRE27368 .030	TAT21136 .030	TRE27364 .030

	d) TT32340			
	e) TAR71617			
	f) TR51112	Use 3	Use 1	Use 3

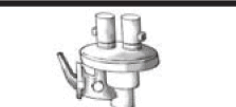
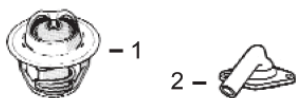


1) Front Seal 2) Rear Seal	1) O/H Gasket Set	1) Bush, Con Rod 2) Bolt, Con Rod	1) Pump, Oil 2) Oil Cooler 3) Rocker Arm 4) Rocker Shaft 5) Pump, Oil Tube	1) Lower Gear 2) Lower Bushing 3) Upper Gear 4) Upper Bushing 5) Cam. Follower 6) Cam. Gear
3) Crankshaft 4) Crankshaft, Gear 5) Ring Gear	2) Head Gasket Set 3) Head Gasket 4) Oil Pan Gasket 5) Rocker Cover Gsk	3) Con Rod		

1) TAR67942 2) TRE44574 (1) 3) TAT18031 4) TT20094 5) TR114282 (142T)	1) TRE38570 2) TRE38848 3) TR98460 4) TR97341 5) TR75729	1) TT23471 x3 2) TR74194 x6 (4) 3) TAT18005	1) TRE55343 2) TRE31929 (3) 3) TRE31973 4) TR54985 5) TR113752	1) TAT24252 2) TT26321 3) TAT18009 4) TT20034 5) TT20073 6) TT20070
---	--	---	--	--



Valve, Intake	Valve, Exhaust	Insert, Valve 1) Intake 2) Exhaust	1) Cap, Valve 2) Lock, Valve	1) Spring, Valve 2) Rotator, Valve 3) O'ring, Valve
TR79623 Std. TR79628 .003 TR79629 .015	TR79624 Std. TR79625 .003 TR79626 .015	1) TR73064 Std. 2) TR51734 Std.	1) TT20129 2) TT20077	1) TR26125 2) TRE11410 3) TR87627



1) Thermostat 2) Thermostat Cover	Fuel Transfer Pump	Water Pump Repair Kit		Injector, Pencil	Seal
1) TRE33705 180° F (2) 2) TT23620	TRE42211	Without Impeller	With Impeller	TAR89564	TR60746 TR48000
		TRE19507	TRE62658		

(1) Do not use with Flywheel Housing (m) T20300, T22991.
 (2) Do not use with Housing (m) R54096, R70741, R74549.
 (3) Conversion Kit [TMX386](#): Available Consists of: [TT31306](#) x1 Nipple [TR99802](#) x2 Hose.
 (4) Use [TR74194](#) with C.Rod (m) T20007; use [TR80033](#) with C.Rod (m) R81410.