

300 Series

Engine & Equipment
Model

3.164

> 179,601

O'rings on Block

Small Pin

3 Cyl

Bore: 4.02 in
102 mm
Pin Ø: 1.185 in
30 mm

Con Rod (m):

T20007, R81410

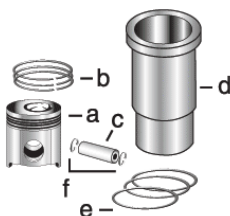
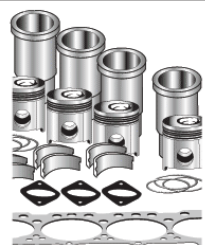
APPLICATIONS:

AGRICULTURAL

1420
1520
1530

CONSTRUCTION

350B



1) Engine O/H Kit

Piston-Liner Kit

Main Bearing

Thrust Bearing

Con Rod Bearing

2) Engine I/F Kit

[TAR71593](#)

Consists of:

- a) [TAR78310](#)
- b) [TAR55759](#)
- c) [TT26149](#)
- d) [TR116463](#)
- e) [TAR71618](#)
- f) [TR51112](#)

[TRE27352](#) Std.

[TAT21139](#) Std.

[TRE27348](#) Std.

[TRE27353](#) .010

[TAT21132](#) .010

[TRE27349](#) .010

[TRE27360](#) .020

[TAT21134](#) .020

[TRE27358](#) .020

[TRE27368](#) .030

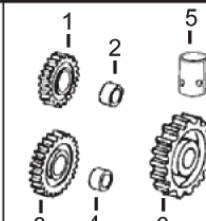
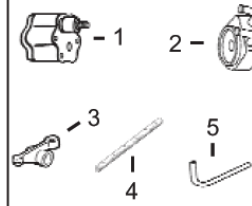
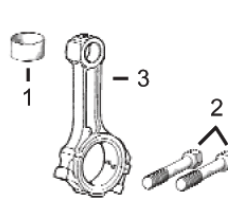
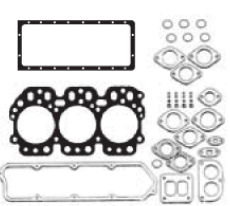
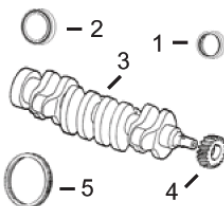
[TAT21136](#) .030

[TRE27364](#) .030

Use 3

Use 1

Use 3



1) Front Seal

2) Rear Seal

1) O/H Gasket Set

1) Bush, Con Rod

2) Bolt, Con Rod

1) Pump, Oil

2) Oil Cooler

3) Rocker Arm

4) Rocker Shaft

5) Pump, Oil Tube

1) Lower Gear

2) Lower Bushing

3) Upper Gear

4) Upper Bushing

5) Cam. Follower

6) Cam. Gear

- 3) Crankshaft
- 4) Crankshaft, Gear
- 5) Ring Gear

- 2) Head Gasket Set
- 3) Head Gasket
- 4) Oil Pan Gasket
- 5) Rocker Cover Gsk

3) Con Rod

- 1) [TAR67942](#)
- 2) [TRE44574](#)
- 3) [TAT18031](#)
- 4) [TT20094](#)
- 5) [TR114282](#) (142T)

- 1) [TRE501578](#)
- 2) [TRE38850](#)
- 3) [TR97356](#)
- 4) [TR97341](#)
- 5) [TR75729](#)

- 1) [TT23471](#) x3
- 2) [TR74194](#) x6 (3)
- 3) [TAT18005](#)

- 1) [TRE55343](#)
- 2) [TRE31929](#) (2)
- 3) [TRE31973](#)
- 4) [TR54985](#)
- 5) [TR113752](#)

- 1) [TAT24252](#)
- 2) [TT26321](#)
- 3) [TAT18009](#)
- 4) [TT20034](#)
- 5) [TT20073](#)
- 6) [TT20070](#)

Valve, Intake

Valve, Exhaust

Insert, Valve

1) Intake

2) Exhaust

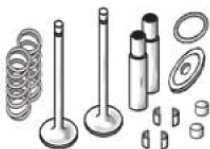
1) Cap, Valve

2) Lock, Valve

1) Spring, Valve

2) Rotator, Valve

3) O'ring, Valve



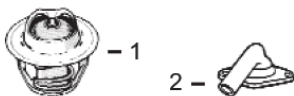
[TR79623](#) Std.
[TR79628](#) .003
[TR79629](#) .015

[TR79624](#) Std.
[TR79625](#) .003
[TR79626](#) .015

1) [TR73064](#) Std.
2) [TR51734](#) Std.

1) [TT20129](#)
2) [TT20077](#)

1) [TR26125](#)
2) [TRE11410](#)
3) [TR87627](#)



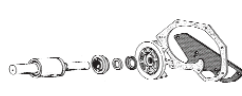
1) Thermostat
2) Thermostat Cover

1) [TRE33705](#) 180° F (1)
2) [TT23620](#)



Fuel Transfer Pump

[TRE42211](#)



Water Pump Rep Kit
a) Without Impeller
b) With Impeller

a) [TRE19507](#)
b) [TRE62658](#)



Water Pump

[TAT27018](#) (m) R48997, (m) R51039



Injector, Pencil

[TAR89564](#)



Seal

[TR60746](#)
[TR48000](#)

(1) Do not use with Housing (m) R54096, R70741, R74549.

(2) Conversion Kit [TMX386](#): Available Consists of: [TT31306](#) x1 Nipple [TR99802](#) x2 Hose.

(3) Use [TR74194](#) with C.Rod (m) T20007; use [TR80033](#) with C.Rod (m) R81410.