

300 Series
Engine & Equipment
Model

3.179D

3 Cyl

Bore: 4.19 in
 106 mm
 Pin Ø: 1.375 in
 35 mm

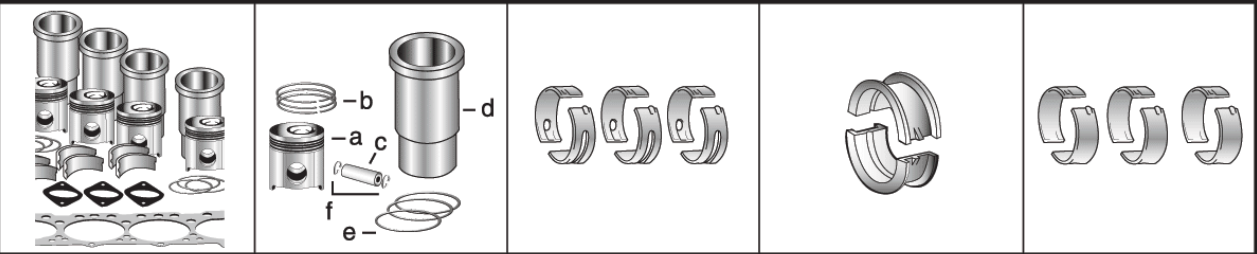
APPLICATIONS:

AGRICULTURAL

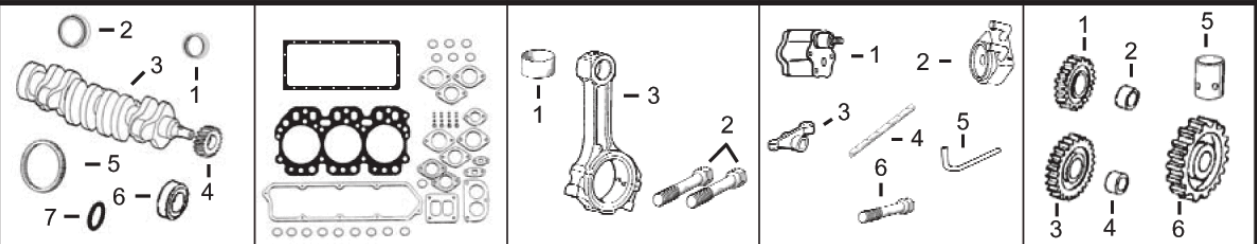
- 1040 1850
- 1140 2040
- 1350 2150
- 1550 2155
- 1630 2240
- 1750 5000

CONSTRUCTION

- 350D
- 355D



1) Engine O/H Kit	Piston-Liner Kit	Main Bearing	Thrust Bearing	Con Rod Bearing
2) Engine I/F Kit	TRE30250 Consists of:	TRE27352 Std.	TAT21139 Std.	TRE27348 Std.
1) TRE47653	a) TRE19282	TRE27353 .010	TAT21132 .010	TRE27349 .010
2) TIK47653	b) TRE66820	TRE27360 .020	TAT21134 .020	TRE27358 .020
	c) TR125754	TRE27368 .030	TAT21136 .030	TRE27364 .030
	d) TR116281			
	e) TAR65507			
	f) TM41029	Use 3	Use 1	Use 3



1) Front Seal 2) Rear Seal	1) O/H Gasket Set	1) Bush, Con Rod 2) Bolt, Con Rod	1) Pump, Oil 2) Oil Cooler 3) Rocker Arm 4) Rocker Shaft 5) Pump, Oil Tube 6) Cyl Hd Cap Screw	1) Lower Gear 2) Lower Bushing 3) Upper Gear 4) Upper Bushing 5) Cam. Follower 6) Cam. Gear
3) Crankshaft 4) Crankshaft, Gear 5) Ring Gear 6) Sleeve, Front 7) Packing, Sleeve	2) Head Gasket Set 3) Head Gasket 4) Oil Pan Gasket 5) Rocker Cover Gsk	3) Con Rod		

1) TAR67942 2) TRE44574 3) TAT18031 (1) 4) TT20094 5) TR114282 (142T) 6) TR81989 7) TH35244	1) TRE501578 2) TRE38850 3) TR97356 4) TR97341 5) TR75729	1) TR55647 x3 2) TR80033 x6 3) TRE16495	1) TRE55343 2) TRE31929 (4) 3) TRE31973 4) TR54985 5) TR113752 6) TR85363 x14 (3)	1) TAT24252 2) TT26321 3) TAT18009 4) TT20034 5) TT20073 6) TT20070
--	--	--	--	--

Valve, Intake	Valve, Exhaust	Insert, Valve 1) Intake 2) Exhaust	1) Cap, Valve 2) Lock, Valve	1) Spring, Valve 2) Guide, Valve 3) O'ring, Valve
TR79623 Std. TR79628 .003 TR79629 .015	TR79624 Std. TR79625 .003 TR79626 .015	1) TR73064 Std. 2) TR51734 Std.	1) TT20129 2) TT20077	1) TR26125 2) TRE11410 3) TR87627

1) Thermostat 2) Thermostat Cover	Fuel Transfer Pump	Water Pump Rep Kit a) Without Impeller b) With Impeller	Water Pump	Transmission Oil Pump	1) Seal 2) Injector, Pencil
1) TRE33705 180° F (2) 2) TT23620	TRE42211	a) TRE19507 b) TRE62658	TAR97708 (m) R73604 TRE60489 (m) R78286, (m) R70437 (m) R100812, (m) R127337 (m) R127918, (m) R55164	TAL120106 TAL68094	1) TR60746 TR48000 2) TAR89564

(1) Crankshaft (m) T23516 (36 mm / 1.37" Snout.) This engine may use **TRE50979** (60 mm / 2.36" Snout) (m) R91834.
 (2) Do not use with Housing (m) R54096, R70741, R74549. For Saran Repower Engines use **TRE64354**.
 (3) Replace all R78558 Cap Screws with Flanged Head Cap Screw **TR85363**.
 (4) Use on engines ESN 794193, after this ESN use **TRE61767**.