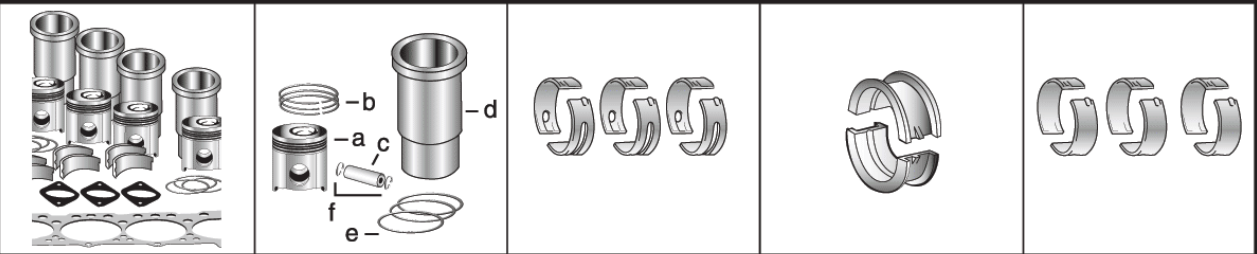
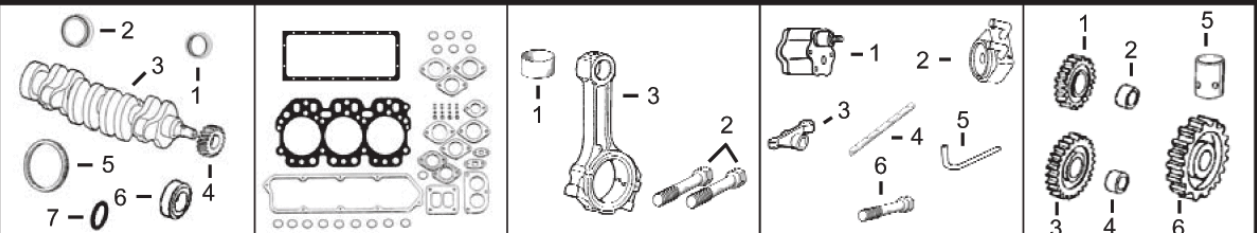


300 Series
Engine & Equipment
Model
3.179T



1) Engine O/H Kit **Piston-Liner Kit** **Main Bearing** **Thrust Bearing** **Con Rod Bearing**

2) Engine I/F Kit	TRE33115 Consists of:	TRE27352 Std.	TAT21139 Std.	TRE27348 Std.
1) TOK3115	a) TRE19278	TRE27353 .010	TAT21132 .010	TRE27349 .010
2) TIK3115	b) TRE66820	TRE27360 .020	TAT21134 .020	TRE27358 .020
	c) TR124230	TRE27368 .030	TAT21136 .030	TRE27364 .030
	d) TR116281			
	e) TAR65507			
	f) TR54114	Use 3	Use 1	Use 3



1) Front Seal 2) Rear Seal	1) O/H Gasket Set	1) Bush, Con Rod 2) Bolt, Con Rod	1) Pump, Oil 2) Oil Cooler 3) Rocker Arm 4) Rocker Shaft 5) Pump, Oil Tube 6) Cyl Hd Cap Screw	1) Lower Gear 2) Lower Bushing 3) Upper Gear 4) Upper Bushing 5) Cam. Follower 6) Cam. Gear
3) Crankshaft 4) Crankshaft, Gear 5) Ring Gear 6) Sleeve, Front 7) Packing, Sleeve	2) Head Gasket Set 3) Head Gasket 4) Oil Pan Gasket 5) Rocker Cover Gsk	3) Con Rod		

1) TAR67942 2) TRE44574 3) TAT18031 (3) 4) TT20094 5) TR114282 (142T) 6) TR81989 7) TH35244	1) TRE501578 2) TRE38850 3) TR97356 4) TR97341 5) TR75729	1) TR57451 x3 2) TR80033 x6 3) TRE58347	1) TRE55343 2) TRE31929 (4) 3) TRE31973 4) TR54985 5) TR113752 6) TR85363 x14 (2)	1) TAT24252 2) TT26321 3) TAT18009 4) TT20034 5) TT20073 6) TT20070
--	--	--	--	--

Valve, Intake	Valve, Exhaust	Insert, Valve 1) Intake 2) Exhaust	1) Cap, Valve 2) Lock, Valve	1) Spring, Valve 2) Rotator, Valve 3) O'ring, Valve
TR83071 Std. TR89223 .003 TR89224 .015	TR79624 Std. TR79625 .003 TR79626 .015	1) TR73064 Std. 2) TR51734 Std.	1) TT20129 2) TT20077	1) TR26125 2) TRE11410 3) TR87627

1) Thermostat 2) Thermostat Cover	Fuel Transfer Pump	Water Pump Rep Kit a) Without Impeller b) With Impeller	Water Pump	Injector, Pencil	Seal
1) TRE33705 180° F (1) 2) TT23620	TRE42211	a) TRE19507 b) TRE62658	TAR97708 (m) R73604 TRE60489 (m) R100812, (m) R127337 (m) R127918, (m) R55164	TRE37503	TR60746 TR48000

APPLICATIONS:
AGRICULTURAL
 2355NCS
 2355NTSS

(1) Do not use with Housing (m) R54096, R70741, R74549. For Saran Repower Engines use **TRE64354**.
 (2) Replace all R78558 Cap Screws with Flanged Head Cap Screw **TR85363**.
 (3) Crankshaft (m) T23516 (36 mm / 1.37" Snout.) This engine may use **TRE50979** (60 mm / 2.36" Snout) (m) R91834.
 (4) Use on engines ESN 794193, after this ESN use **TRE61767**.