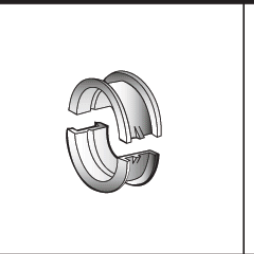
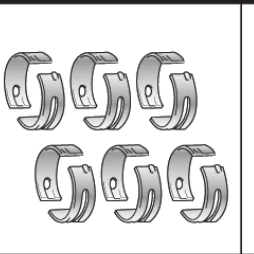
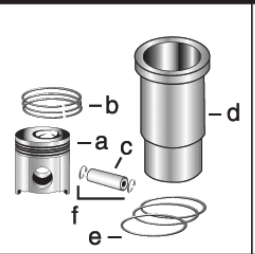


**300 Series**  
**Engine & Equipment**  
**Model**  
**6.359D**



**6 Cyl**

Bore: 4.19 in  
 106.5 mm

Pin Ø: 1.375 in  
 35 mm

**1) Engine O/H Kit**      **Piston-Liner Kit**      **Main Bearing**      **Thrust Bearing**      **Con Rod Bearing**

**2) Engine I/F Kit**

**1) [TRE50784](#)**

**2) [TIK50784](#)**

**[TRE30250](#)**

Consists of:

a) [TRE19282](#)  
 b) [TRE66820](#)  
 c) [TR125754](#)  
 d) [TR116281](#)  
 e) [TAR65507](#)  
 f) [TM41029](#)

**[TRE27352](#) Std.**

**[TRE27353](#) .010**  
**[TRE27360](#) .020**  
**[TRE27368](#) .030**

**Use 6**

**[TAT21139](#) Std.**

**[TAT21132](#) .010**  
**[TAT21134](#) .020**  
**[TAT21136](#) .030**

**Use 1**

**[TRE27348](#) Std.**

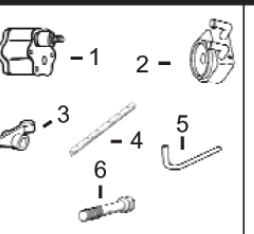
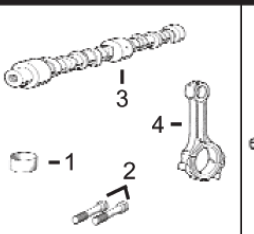
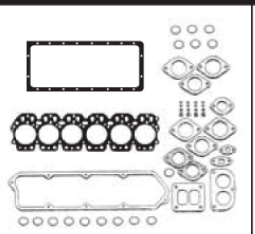
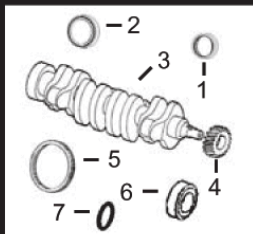
**[TRE27349](#) .010**  
**[TRE27358](#) .020**  
**[TRE27364](#) .030**

**Use 6**

**APPLICATIONS:**

**AGRICULTURAL**

|      |         |      |
|------|---------|------|
| 955  | 3040    | 3640 |
| 975  | 3050    | 4420 |
| 985  | 3140    | 4530 |
| 1055 | 3150    | 7440 |
| 1075 | 3155    | 7445 |
| 2940 | 3155TSS | 9900 |
| 2950 | 3255    | 9910 |
| 2955 | 3350    | 9920 |



**1) Front Seal**  
**2) Rear Seal**

3) Crankshaft  
 4) Crankshaft, Gear  
 5) Ring Gear  
 6) Sleeve, Front  
 7) Packing, Sleeve

**1) O/H Gasket Set**

2) Head Gasket Set  
 3) Head Gasket  
 4) Oil Pan Gasket  
 5) Rocker Cover Gsk

**1) Bush, Con Rod**  
**2) Bolt, Con Rod**

3) Camshaft  
 4) Con Rod

1) Pump, Oil  
 2) Oil Cooler  
 3) Rocker Arm  
 4) Rocker Shaft  
 5) Pump, Oil Tube  
 6) Cyl Hd Cap Screw

1) Lower Gear  
 2) Lower Bushing  
 3) Upper Gear  
 4) Upper Bushing  
 5) Cam. Follower  
 6) Cam. Gear

**CONSTRUCTION**

444D  
 570B

1) [TAR67942](#)  
 2) [TRE44574](#)  
 3) [TAT22562](#)  
 4) [TT20094](#)  
 5) [TR28811](#) (129T)  
 6) [TR81989](#)  
 7) [TH35244](#)

1) [TRE501580](#)  
 2) [TRE38852](#)  
 3) [TR114157](#)  
 4) [TR97344](#)  
 5) [TR75728](#)

1) [TR55647](#) x6  
 2) [TR80033](#) x12  
 3) [TR82821](#) (3)  
 4) [TRE16495](#)

1) [TRE55343](#) (2)  
 2) [TRE31929](#)  
 3) [TRE31973](#)  
 4) [TR54986](#)  
 5) [TR113752](#)  
 6) [TR85363](#) x26 (4)

1) [TAT24252](#)  
 2) [TT26321](#)  
 3) [TAT18009](#)  
 4) [TT20034](#)  
 5) [TT20073](#)  
 6) [TT20070](#)



Valve, Intake

[TR79623](#) Std.  
[TR79628](#) .003  
[TR79629](#) .015

Valve, Exhaust

[TR79624](#) Std.  
[TR79625](#) .003  
[TR79626](#) .015

Insert, Valve

1) Intake  
 2) Exhaust

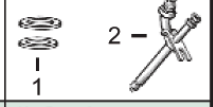
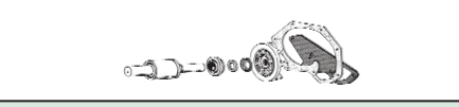
1) [TR73064](#) Std.  
 2) [TR51734](#) Std.

1) Cap, Valve  
 2) Lock, Valve

1) [TT20129](#)  
 2) [TT20077](#)

1) Spring, Valve  
 2) Rotator, Valve  
 3) O'ring, Valve

1) [TR26125](#)  
 2) [TRE11410](#)  
 3) [TR87627](#)



**Thermostat**

[TAR48675](#) 180° F (1)

**Fuel Transfer Pump**

[TRE42211](#)

**Water Pump Repair Kit**

Without Impeller      With Impeller

[See Chart](#)

**Transmission Oil Pump**

[TAL120106](#)      [TAL68094](#)

Verify P/N for your application

1) Seal  
 2) Injector, Pencil

1) [TR60746](#)  
[TR48000](#)  
 2) [TAR89564](#)

(1) Saran engines may use [TRE64354](#).  
 (2) Some Engines Models may use High Capacity Pump, Oil [TRE65580](#).  
 (3) Threaded Type.  
 (4) Replace all R78558 Cap Screws with Flanged Head Cap Screw [TR85363](#).