

**400 Series**  
**Engine & Equipment**  
**Model**

**4.270**

> 280,000

Early Power Booster

4 Cyl

Bore: 4.25 in  
 108 mm  
 Pin Ø: 1.50 in  
 38 mm

**Block (m):**  
 R26160, R32020, R40850

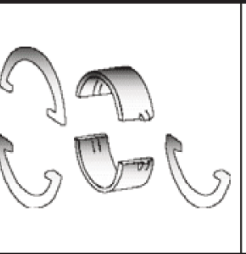
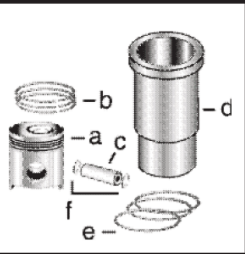
**APPLICATIONS:**

**AGRICULTURAL**

3010  
 3020

**CONSTRUCTION**

500  
 500A  
 500B  
 500C  
 510



1) Engine O/H Kit

Piston-Liner Kit

Main Bearing

Thrust Bearing

Con Rod Bearing

2) Engine I/F Kit

**TPLK163**  
 Consists of:  
 a) [TRE23163](#)  
 b) [TAR65502](#)  
 c) [TR44161](#)  
 d) [TR32050](#)  
 e) [TAR40155](#)  
 f) [TH80753](#)

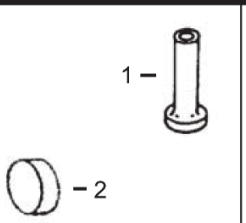
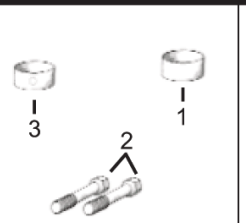
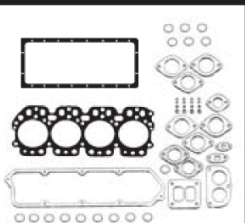
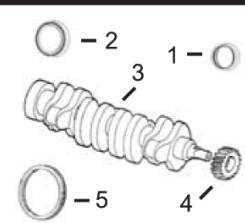
[TAR49243](#) Std.  
[TAR49245](#) .010  
[TAR49246](#) .020  
[TAR49247](#) .030  
**Use 4**

[TAR49242](#) Std.  
[TAR49238](#) .010  
[TAR49239](#) .020  
[TAR49240](#) .030  
**Use 1**

[TAR45723](#) Std.  
[TAR46396](#) .010  
[TAR46397](#) .020  
[TAR46398](#) .030  
**Use 4**

1) [TOK4163](#)

2) [TIK4163](#)



1) Front Seal  
 2) Rear Seal

1) O/H Gasket Set

1) Bush, Con Rod  
 2) Bolt, Con Rod  
 3) Bushing, Cam

1) Cam Follower  
 2) Plug, Camshaft

1) Head Bolt Kit

3) Crankshaft  
 4) Crankshaft, Gear  
 5) Ring Gear

2) Head Gasket Set  
 3) Head Gasket  
 4) Oil Pan Gasket

1) [TAR49025](#)  
 2) [TRE520036](#)  
 3) [TAR40485](#) (1)  
 c/s (m) R40570  
 4) [TR26049](#) (23T)  
 5) [TR28811](#) (129T)

1) [TAR53033](#)  
 2) [TAR53032](#)  
 3) [TR45616](#)  
 4) [TR71917](#)

1) [TR30939](#) x4  
 2) [TR66452](#) x8  
 3) [TR46903](#) x3

1) [TR26342](#)  
 2) [TR26115](#)

1) [TMX364](#) (2)

Valve, Intake

Valve, Exhaust

Insert, Valve  
 1) Intake  
 2) Exhaust

1) Cap, Valve  
 2) Rotator, Valve

1) Spring, Valve  
 2) Guide, Valve  
 3) O'ring, Valve

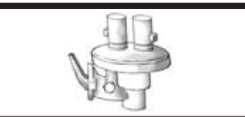
[TR26124](#) Std.  
 ES > 157,001  
[TR44174](#) Std.  
 ES 157,002-280,000

[TR26123](#) Std.  
 ES > 157,001  
[TR44175](#) Std.  
 ES 157,002-280,000

1) [TR43680](#) Std.  
 2) [TR43681](#) Std.

1) N/A  
 2) N/A

1) [TR26125](#)  
 2) [TR28654](#)  
 3) [TR87627](#)



Thermostat

Fuel Transfer Pump

Water Pump Repair Kit

Injector, Pencil

Seal, Injector

[TR36846](#) 180° F  
[TAR53567](#)  
[TRE42211](#)

Without Impeller      With Impeller  
 See Chart

[TAR50781](#)

[TR60746](#)  
[TR48000](#)

(1) New style crankshaft. To adapt to old style center hole needs to be enlarged 2.835 in. (72.0009 mm). Extra bolt holes need to be plugged with Allen head screws and tread lock.  
 (2) [TMX364](#) Consists of: [TR88042](#) x4, [TR88043](#) x3, [TR88044](#) x6, [TR88045](#) x5.