

400 Series
Engine & Equipment
Model

4.270

> 280,000

Early Power Booster

4 Cyl

Bore: 4.25 in
 108 mm
 Pin Ø: 1.50 in
 38 mm

Block (m):
 R26160, R32020, R40850

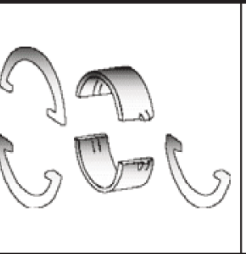
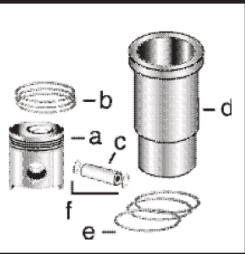
APPLICATIONS:

AGRICULTURAL

3010
 3020

CONSTRUCTION

500
 500A
 500B
 500C
 510



1) Engine O/H Kit

Piston-Liner Kit

Main Bearing

Thrust Bearing

Con Rod Bearing

2) Engine I/F Kit

TPLK163
 Consists of:
 a) [TRE23163](#)
 b) [TAR65502](#)
 c) [TR44161](#)
 d) [TR32050](#)
 e) [TAR40155](#)
 f) [TH80753](#)

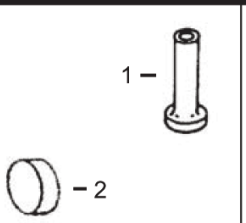
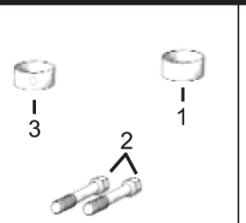
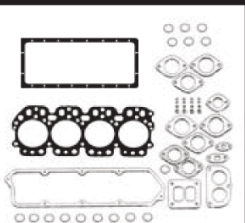
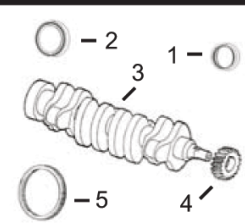
[TAR49243](#) Std.
[TAR49245](#) .010
[TAR49246](#) .020
[TAR49247](#) .030
Use 4

[TAR49242](#) Std.
[TAR49238](#) .010
[TAR49239](#) .020
[TAR49240](#) .030
Use 1

[TAR45723](#) Std.
[TAR46396](#) .010
[TAR46397](#) .020
[TAR46398](#) .030
Use 4

1) [TOK4163](#)

2) [TIK4163](#)



1) Front Seal
2) Rear Seal

1) O/H Gasket Set

1) Bush, Con Rod
2) Bolt, Con Rod
3) Bushing, Cam

1) Cam Follower
2) Plug, Camshaft

1) Head Bolt Kit

3) Crankshaft
 4) Crankshaft, Gear
 5) Ring Gear

2) Head Gasket Set
 3) Head Gasket
 4) Oil Pan Gasket

1) [TAR49025](#)
 2) [TRE520036](#)
 3) [TAR40485](#) (1)
 c/s (m) R40570
 4) [TR26049](#) (23T)
 5) [TR28811](#) (129T)

1) [TAR53033](#)
 2) [TAR53032](#)
 3) [TR45616](#)
 4) [TR71917](#)

1) [TR30939](#) x4
 2) [TR66452](#) x8
 3) [TR46903](#) x3

1) [TR26342](#)
 2) [TR26115](#)

1) [TMX364](#) (2)

Valve, Intake

Valve, Exhaust

Insert, Valve
 1) Intake
 2) Exhaust

1) Cap, Valve
 2) Rotator, Valve

1) Spring, Valve
 2) Guide, Valve
 3) O'ring, Valve

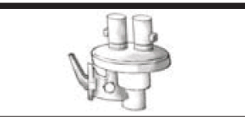
[TR26124](#) Std.
 ES > 157,001
[TR44174](#) Std.
 ES 157,002-280,000

[TR26123](#) Std.
 ES > 157,001
[TR44175](#) Std.
 ES 157,002-280,000

1) [TR43680](#) Std.
 2) [TR43681](#) Std.

1) N/A
 2) N/A

1) [TR26125](#)
 2) [TR28654](#)
 3) [TR87627](#)



Thermostat

Fuel Transfer Pump

Water Pump Repair Kit

Injector, Pencil

Seal, Injector

[TR36846](#) 180° F
[TAR53567](#)
[TRE42211](#)

Without Impeller With Impeller
See Chart

[TAR50781](#)

[TR60746](#)
[TR48000](#)

(1) New style crankshaft. To adapt to old style center hole needs to be enlarged 2.835 in. (72.0009 mm). Extra bolt holes need to be plugged with Allen head screws and tread lock.
 (2) [TMX364](#) Consists of: [TR88042](#) x4, [TR88043](#) x3, [TR88044](#) x6, [TR88045](#) x5.