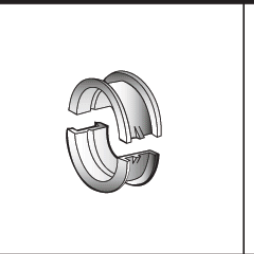
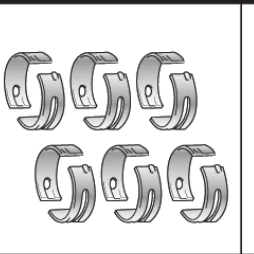
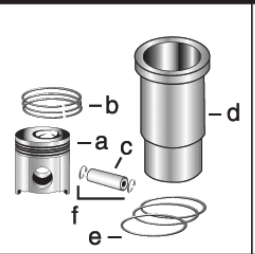


300 Series
Engine & Equipment
Model
6.359D



6 Cyl

Bore: 4.19 in
 106.5 mm

Pin Ø: 1.375 in
 35 mm

1) Engine O/H Kit **Piston-Liner Kit** **Main Bearing** **Thrust Bearing** **Con Rod Bearing**

2) Engine I/F Kit

1) [TRE50784](#)

2) [TIK50784](#)

[TRE30250](#)

Consists of:

a) [TRE19282](#)
 b) [TRE66820](#)
 c) [TR125754](#)
 d) [TR116281](#)
 e) [TAR65507](#)
 f) [TM41029](#)

[TRE27352](#) Std.

[TRE27353](#) .010
[TRE27360](#) .020
[TRE27368](#) .030

Use 6

[TAT21139](#) Std.

[TAT21132](#) .010
[TAT21134](#) .020
[TAT21136](#) .030

Use 1

[TRE27348](#) Std.

[TRE27349](#) .010
[TRE27358](#) .020
[TRE27364](#) .030

Use 6

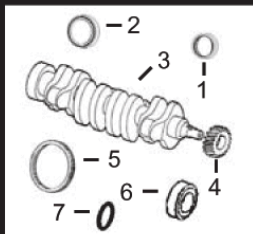
APPLICATIONS:

AGRICULTURAL

955	3040	3640
975	3050	4420
985	3140	4530
1055	3150	7440
1075	3155	7445
2940	3155TSS	9900
2950	3255	9910
2955	3350	9920

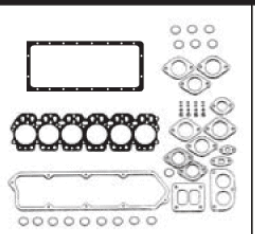
CONSTRUCTION

444D
 570B



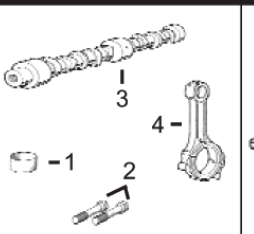
1) Front Seal
2) Rear Seal

3) Crankshaft
 4) Crankshaft, Gear
 5) Ring Gear
 6) Sleeve, Front
 7) Packing, Sleeve



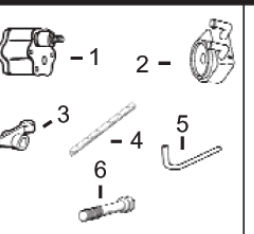
1) O/H Gasket Set

2) Head Gasket Set
 3) Head Gasket
 4) Oil Pan Gasket
 5) Rocker Cover Gsk



1) Bush, Con Rod
2) Bolt, Con Rod

3) Camshaft
 4) Con Rod



1) Pump, Oil
 2) Oil Cooler
 3) Rocker Arm
 4) Rocker Shaft
 5) Pump, Oil Tube
 6) Cyl Hd Cap Screw



1) Lower Gear
 2) Lower Bushing
 3) Upper Gear
 4) Upper Bushing
 5) Cam. Follower
 6) Cam. Gear

1) [TAR67942](#)
 2) [TRE44574](#)
 3) [TAT22562](#)
 4) [TT20094](#)
 5) [TR28811](#) (129T)
 6) [TR81989](#)
 7) [TH35244](#)

1) [TRE501580](#)
 2) [TRE38852](#)
 3) [TR114157](#)
 4) [TR97344](#)
 5) [TR75728](#)

1) [TR55647](#) x6
 2) [TR80033](#) x12
 3) [TR82821](#) (3)
 4) [TRE16495](#)

1) [TRE55343](#) (2)
 2) [TRE31929](#)
 3) [TRE31973](#)
 4) [TR54986](#)
 5) [TR113752](#)
 6) [TR85363](#) x26 (4)

1) [TAT24252](#)
 2) [TT26321](#)
 3) [TAT18009](#)
 4) [TT20034](#)
 5) [TT20073](#)
 6) [TT20070](#)



Valve, Intake

[TR79623](#) Std.
[TR79628](#) .003
[TR79629](#) .015

Valve, Exhaust

[TR79624](#) Std.
[TR79625](#) .003
[TR79626](#) .015

Insert, Valve

1) Intake
 2) Exhaust

1) [TR73064](#) Std.
 2) [TR51734](#) Std.

1) Cap, Valve
 2) Lock, Valve

1) [TT20129](#)
 2) [TT20077](#)

1) Spring, Valve
 2) Rotator, Valve
 3) O'ring, Valve

1) [TR26125](#)
 2) [TRE11410](#)
 3) [TR87627](#)



Thermostat

[TAR48675](#) 180° F (1)



Fuel Transfer Pump

[TRE42211](#)



Water Pump Repair Kit

Without Impeller With Impeller

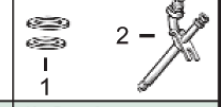
[TAL120106](#) [TAL68094](#)

See Chart



Transmission Oil Pump

Verify P/N for your application



1) Seal
 2) Injector, Pencil

1) [TR60746](#)
[TR48000](#)
 2) [TAR89564](#)

(1) Saran engines may use [TRE64354](#).
 (2) Some Engines Models may use High Capacity Pump, Oil [TRE65580](#).
 (3) Threaded Type.
 (4) Replace all R78558 Cap Screws with Flanged Head Cap Screw [TR85363](#).