

400 Series

Engine & Equipment
Model

6.404D

215,000-335,845

6 Cyl

Bore: 4.25 in
108 mm
Pin Ø: 1.50 in
38 mm

Block (m):

R40610, R40620, R45950,
R47170, R48440

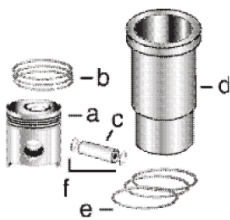
APPLICATIONS:

AGRICULTURAL

4000
4010
4020

CONSTRUCTION

600



1) Engine O/H Kit

Piston-Liner Kit

Main Bearing

Thrust Bearing

Con Rod Bearing

2) Engine I/F Kit

[TRE23165](#)

Consists of:

- a) [TRE23168](#)
- b) [TAR55630](#)
- c) [TR44161](#)
- d) [TR40615](#)
- e) [TAR65507](#)
- f) [TH80753](#)

- [TAR74814](#) Std.
- [TAR74816](#) .010
- [TAR74817](#) .020
- [TAR74818](#) .030

Use 6

- [TAR77748](#) Std.
- [TAR77750](#) .010
- [TAR77751](#) .020
- [TAR77752](#) .030

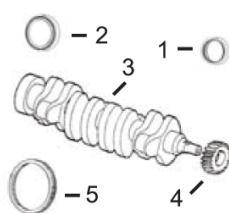
Use 1

Thrust Washer

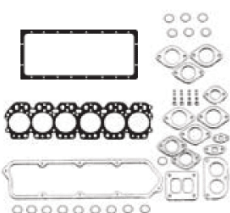
- [TAR77747](#) Std.
 - [TAR77753](#) .007
- Use 3, Order Qty 1

- [TAR45723](#) Std.
- [TAR46396](#) .010
- [TAR46397](#) .020
- [TAR46398](#) .030

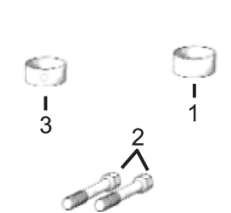
Use 6



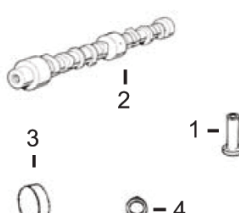
1) Front Seal
2) Rear Seal



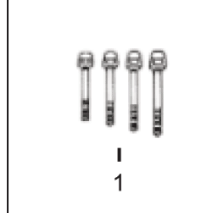
1) O/H Gasket Set



1) Bush, Con Rod
2) Bolt, Con Rod
3) Bushing, Cam



1) Cam Follower
2) Camshaft Kit
3) Plug, Camshaft
4) O'ring, Oil Cooler



1) Head Bolt Kit

3) Crankshaft
4) Crankshaft, Gear
5) Ring Gear

2) Head Gasket Set
3) Head Gasket
4) Oil Pan Gasket

- 1) [TAR49025](#)
- 2) [TRE520036](#)
- 3) [TRE53422](#) (5)
- 4) [TR26049](#) (23T)
- 5) [TR28811](#) (129T)

- 1) [TAR53631](#)
- 2) [TAR53630](#)
- 3) [TR48291](#)
- 4) [TR71918](#)

- 1) [TR30939](#) x6
- 2) [TR66452](#) x12
- 3) [TR46903](#) x4

- 1) [TR52773](#)
- 2) [TAR100386](#)
- 3) [TR26115](#)
- 4) [TR47153](#)

- 1) [TMX365](#) (1)



Valve, Intake

Valve, Exhaust

Insert, Valve

1) Intake
2) Exhaust

1) Cap, Valve
2) Lock, Valve

1) Spring, Valve
2) Rotator, Valve
3) O'ring, Valve

- [TR43883](#) Std.
- [TR45003](#) .003
- [TR45004](#) .015

- [TR43679](#) Std.
- [TR43787](#) .003
- [TR43788](#) .015

- 1) [TR43680](#) Std.
- 2) [TR43681](#) Std.

- 1) [TT20129](#)
- 2) [TT20077](#)

- 1) [TR26125](#)
- 2) [TRE11410](#)
- 3) [TR87627](#)



Thermostat



Fuel Transfer Pump



Water Pump Repair Kit

Without Impeller

With Impeller



1) Injector, Pencil
2) Seal, Injector

- 1) [TAR50781](#)
- 2) [TR60746](#)
- [TR48000](#)



Pump, Oil, Quad
Transmission

[TR36846](#) 180° F

- [TAR53567](#) (2)
- [TRE42211](#) (3)
- [TAR49771](#) (4)

See Chart

[TAR41949](#)
For Tractors
4000,4020

(1) [TMX365](#) Consists of: [TR88042](#) x6, [TR88043](#) x5, [TR88044](#) x8, [TR88045](#) x7.

(2) ES > 82,801.

(3) ES 82,802-422,365.

(4) ES 422,366 >.

(5) [TRE53422](#) will require front key [TR116311](#) for the front damper.