

# 400 Series

Engine & Equipment  
Model

## 6.404D

> 214, 999

6 Cyl

Bore: 4.25 in  
108 mm  
Pin Ø: 1.50 in  
38 mm

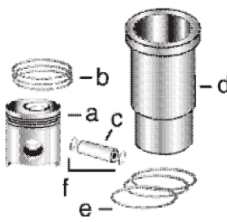
**Block (m): (1)**

R26070, R33180, R34340,  
R40890, R40900

### APPLICATIONS:

#### AGRICULTURAL

4010  
4020



1) Engine O/H Kit

Piston-Liner Kit

Main Bearing

Thrust Bearing

Con Rod Bearing

2) Engine I/F Kit

[TRE23173](#)

[TAR49243](#) Std.

[TAR49242](#) Std.

[TAR45723](#) Std.

Consists of:

1) [TRG17901](#)

a) [TRE23172](#)

[TAR49245](#) .010

[TAR49238](#) .010

[TAR46396](#) .010

b) [TAR55630](#)

[TAR49246](#) .020

[TAR49239](#) .020

[TAR46397](#) .020

c) [TR44161](#)

[TAR49247](#) .030

[TAR49240](#) .030

[TAR46398](#) .030

d) [TR32050](#)

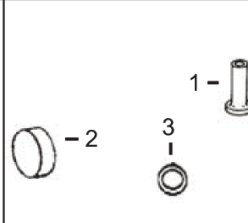
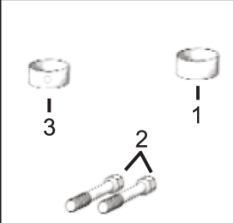
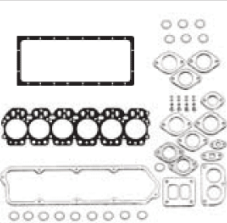
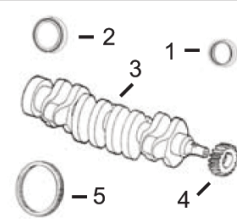
e) [TAR40155](#)

f) [TH80753](#)

Use 6

Use 1

Use 6



1) Front Seal  
2) Rear Seal

1) O/H Gasket Set

1) Bush, Con Rod  
2) Bolt, Con Rod  
3) Bushing, Cam

1) Cam Follower  
2) Plug, Camshaft  
3) O'ring, Oil Cooler

3) Crankshaft  
4) Crankshaft, Gear  
5) Ring Gear

2) Head Gasket Set  
3) Head Gasket  
4) Oil Pan Gasket

1) [TAR49025](#)  
2) [TRE520036](#)  
3) [TRE53422](#) (5)  
4) [TR26049](#) (23T)  
5) [TR28811](#) (129T)

1) [TAR53626](#)  
2) [TAR53625](#)  
3) [TR45615](#)  
4) [TR71918](#)

1) [TR30939](#) x6  
2) [TR66452](#) x12  
3) [TR46903](#) x4

1) [TR26342](#)  
2) [TR26115](#)  
3) [TR47153](#)



Valve, Intake

Valve, Exhaust

Insert, Valve

Cap, Valve

1) Spring, Valve  
2) Guide, Valve  
3) O'ring, Valve

[TR26124](#) Std.  
ES > 82,801  
[TR44174](#) Std.  
ES 82,802-214,999

[TR26123](#) Std.  
ES > 82,801  
[TR44175](#) Std.  
ES 82,802-214,999

1) [TR43680](#) Std.  
2) [TR43681](#) Std.

N/A

1) [TR26125](#)  
2) [TR28654](#)  
3) [TR87627](#)



Thermostat



Fuel Transfer Pump



Water Pump Repair Kit



1) Injector, Pencil  
2) Seal, Injector



Pump, Oil, Quad  
Transmission

[TR36846](#) 180° F

[TAR53567](#) (2)  
[TRE42211](#) (3)  
[TAR49771](#) (4)

Without Impeller      With Impeller

See Chart

1) [TAR50781](#)  
2) [TR60746](#)  
[TR48000](#)

[TAR41949](#)  
For Tractors  
4010,4020

(1) Original Block.

(2) ES > 82,801.

(3) ES 82,802-422,365.

(4) ES 422,366 >.

(5) TRE53422 will require front key [TR116311](#) for the front damper.