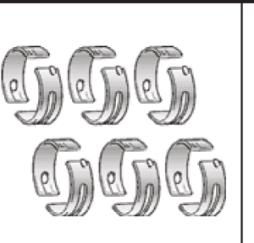
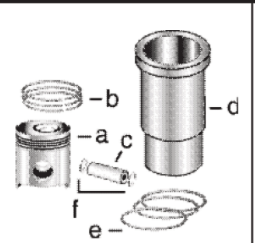
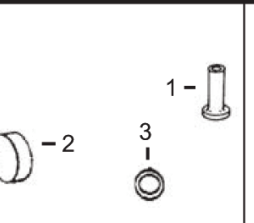
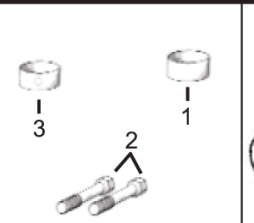
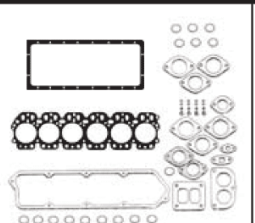
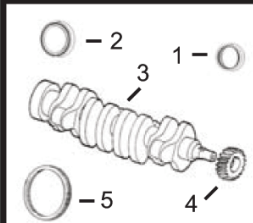


**400 Series**  
**Engine & Equipment**  
**Model**  
**6.404D**



<b>1) Engine O/H Kit</b>	<b>Piston-Liner Kit</b>	<b>Main Bearing</b>	<b>Thrust Bearing</b>	<b>Con Rod Bearing</b>
<b>2) Engine I/F Kit</b>	<b>TPLK163</b> Consists of: a) <a href="#">TRE23163</a> b) <a href="#">TAR65502</a> c) <a href="#">TR44161</a> d) <a href="#">TR32050</a> e) <a href="#">TAR40155</a> f) <a href="#">TH80753</a>	<a href="#">TAR49243</a> Std. <a href="#">TAR49245</a> .010 <a href="#">TAR49246</a> .020 <a href="#">TAR49247</a> .030	<a href="#">TAR49242</a> Std. <a href="#">TAR49238</a> .010 <a href="#">TAR49239</a> .020 <a href="#">TAR49240</a> .030	<a href="#">TAR45723</a> Std. <a href="#">TAR46396</a> .010 <a href="#">TAR46397</a> .020 <a href="#">TAR46398</a> .030
<b>1) <a href="#">TOK6163</a></b>				
<b>2) <a href="#">TIK6163</a></b>		<b>Use 6</b>	<b>Use 1</b>	<b>Use 6</b>



<b>1) Front Seal</b> <b>2) Rear Seal</b>	<b>1) O/H Gasket Set</b>	<b>1) Bush, Con Rod</b> <b>2) Bolt, Con Rod</b> <b>3) Bushing, Cam</b>	1) Cam Follower 2) Plug, Camshaft 3) O'ring, Oil Cooler	
3) Crankshaft 4) Crankshaft, Gear 5) Ring Gear	2) Head Gasket Set 3) Head Gasket 4) Oil Pan Gasket			
1) <a href="#">TAR49025</a> 2) <a href="#">TRE520036</a> 3) <a href="#">TRE53422</a> (4) 4) <a href="#">TR26049</a> (23T) 5) <a href="#">TR28811</a> (129T)	1) <a href="#">TAR53626</a> 2) <a href="#">TAR53625</a> 3) <a href="#">TR45615</a> 4) <a href="#">TR71918</a>	1) <a href="#">TR30939</a> x6 2) <a href="#">TR66452</a> x12 3) <a href="#">TR46903</a> x4	1) <a href="#">TR26342</a> 2) <a href="#">TR26115</a> 3) <a href="#">TR47153</a>	

Valve, Intake	<a href="#">TR26124</a> Std. ES > 82,801 <a href="#">TR44174</a> Std. ES 82,802-214,999
---------------	--

Valve, Exhaust	<a href="#">TR26123</a> Std. ES > 82,801 <a href="#">TR44175</a> Std. ES 82,802-214,999
----------------	--

Insert, Valve 1) Intake 2) Exhaust	1) <a href="#">TR43680</a> Std. 2) <a href="#">TR43681</a> Std.
--	--

Cap, Valve	N/A
------------	-----

1) Spring, Valve 2) Guide, Valve 3) O'ring, Valve	1) <a href="#">TR26125</a> 2) <a href="#">TR28654</a> 3) <a href="#">TR87627</a>
---	--

Thermostat	<a href="#">TR36846</a> 180° F
------------	--------------------------------

Fuel Transfer Pump	<a href="#">TAR53567</a> (1) <a href="#">TRE42211</a> (2) <a href="#">TAR49771</a> (3)
Water Pump Repair Kit	Without Impeller      With Impeller
	<a href="#">See Chart</a>

1) Injector, Pencil 2) Seal, Injector	1) <a href="#">TAR50781</a> 2) <a href="#">TR60746</a> <a href="#">TR48000</a>
--	--

Pump, Oil, Quad Transmission	<a href="#">TAR41949</a> For Tractors 4010,4020
------------------------------	---

(1) ES > 82,801.  
 (2) ES 82,802-422,365.  
 (3) ES 422,366 >.  
 (4) TRE53422 will require front key [TR116311](#) for the front damper.