

400 Series

Engine & Equipment
Model

6.404D

> 214,999

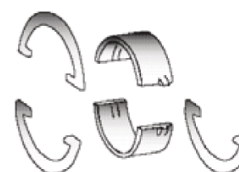
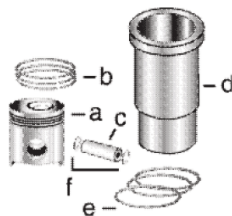
6 Cyl

Bore: 4.25 in
108 mm
Pin Ø: 1.50 in
38 mm

Block (m): (1)
R40930

APPLICATIONS:

AGRICULTURAL
4010
4020



1) Engine O/H Kit

Piston-Liner Kit

Main Bearing

Thrust Bearing

Con Rod Bearing

2) Engine I/F Kit

[TRE23170](#)

Consists of:

- a) [TRE23172](#)
- b) [TAR55630](#)
- c) [TR44161](#)
- d) [TR40615](#)
- e) [TAR65507](#)
- f) [TH80753](#)

- [TAR74814](#) Std.
- [TAR74816](#) .010
- [TAR74817](#) .020
- [TAR74818](#) .030

Use 6

- [TAR77748](#) Std.
- [TAR77750](#) .010
- [TAR77751](#) .020
- [TAR77752](#) .030

Use 1

Thrust Washer

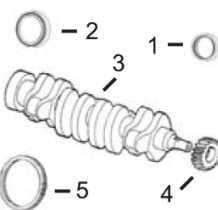
- [TAR77747](#) Std.
 - [TAR77753](#) .007
- Use 3, Order Qty 1

- [TAR45723](#) Std.
- [TAR46396](#) .010
- [TAR46397](#) .020
- [TAR46398](#) .030

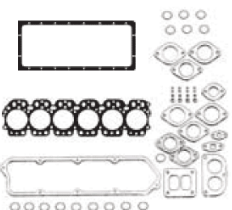
Use 6

1) [TRG17902](#)

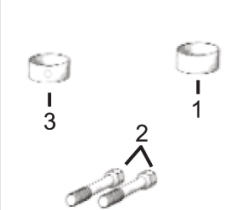
2) [TIK17902](#)



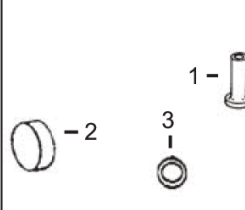
1) Front Seal
2) Rear Seal



1) O/H Gasket Set



1) Bush, Con Rod
2) Bolt, Con Rod
3) Bushing, Cam



1) Cam Follower
2) Plug, Camshaft
3) O'ring, Oil Cooler

3) Crankshaft
4) Crankshaft, Gear
5) Ring Gear

2) Head Gasket Set
3) Head Gasket
4) Oil Pan Gasket

- 1) [TAR49025](#)
- 2) [TRE520036](#)
- 3) [TRE53422](#) (5)
- 4) [TR26049](#) (23T)
- 5) [TR28811](#) (129T)

- 1) [TAR53626](#)
- 2) [TAR53625](#)
- 3) [TR45615](#)
- 4) [TR71918](#)

- 1) [TR30939](#) x6
- 2) [TR66452](#) x12
- 3) [TR46903](#) x4

- 1) [TR52773](#)
- 2) [TR26115](#)
- 3) [TR47153](#)



Valve, Intake

Valve, Exhaust

Insert, Valve

Cap, Valve

1) Spring, Valve
2) Guide, Valve
3) O'ring, Valve

- [TR26124](#) Std.
- ES > 157,001
- [TR44174](#) Std.
- ES 157,002-280,000

- [TR26123](#) Std.
- ES > 82,801
- [TR44175](#) Std.
- ES 82,802-214,999

- 1) [TR43680](#) Std.
- 2) [TR43681](#) Std.

N/A

- 1) [TR26125](#)
- 2) [TR28654](#)
- 3) [TR87627](#)



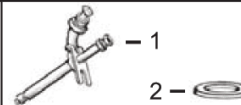
Thermostat



Fuel Transfer Pump



Water Pump Repair Kit



1) Injector, Pencil
2) Seal, Injector



Pump, Oil, Quad
Transmission

[TR36846](#) 180° F

- [TAR53567](#) (2)
- [TRE42211](#) (3)
- [TAR49771](#) (4)

Without Impeller With Impeller

[See Chart](#)

- 1) [TAR50781](#)
- 2) [TR60746](#)
- [TR48000](#)

[TAR41949](#)
For Tractors
4010,4020

(1) Original Block.

(2) ES > 82,801.

(3) ES 82,802-422,365.

(4) ES 422,366 >.

(5) TRE53422 will require front key [TR116311](#) for the front damper.