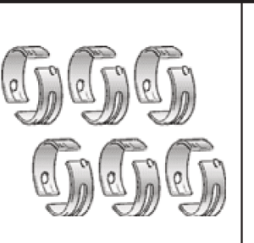
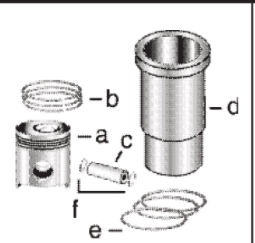
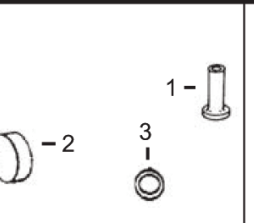
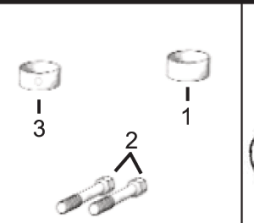
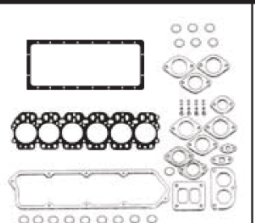
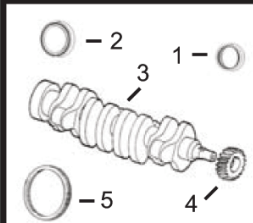


400 Series
Engine & Equipment
Model
6.404D



1) Engine O/H Kit	Piston-Liner Kit	Main Bearing	Thrust Bearing	Con Rod Bearing
2) Engine I/F Kit	TPLK163 Consists of: a) TRE23163 b) TAR65502 c) TR44161 d) TR32050 e) TAR40155 f) TH80753	TAR49243 Std. TAR49245 .010 TAR49246 .020 TAR49247 .030	TAR49242 Std. TAR49238 .010 TAR49239 .020 TAR49240 .030	TAR45723 Std. TAR46396 .010 TAR46397 .020 TAR46398 .030
1) TOK6163				
2) TIK6163		Use 6	Use 1	Use 6



1) Front Seal 2) Rear Seal	1) O/H Gasket Set	1) Bush, Con Rod 2) Bolt, Con Rod 3) Bushing, Cam	1) Cam Follower 2) Plug, Camshaft 3) O'ring, Oil Cooler	
3) Crankshaft 4) Crankshaft, Gear 5) Ring Gear	2) Head Gasket Set 3) Head Gasket 4) Oil Pan Gasket			
1) TAR49025 2) TRE520036 3) TRE53422 (4) 4) TR26049 (23T) 5) TR28811 (129T)	1) TAR53626 2) TAR53625 3) TR45615 4) TR71918	1) TR30939 x6 2) TR66452 x12 3) TR46903 x4	1) TR26342 2) TR26115 3) TR47153	

Valve, Intake	TR26124 Std. ES > 82,801 TR44174 Std. ES 82,802-214,999
---------------	--

Valve, Exhaust	TR26123 Std. ES > 82,801 TR44175 Std. ES 82,802-214,999
----------------	--

Insert, Valve 1) Intake 2) Exhaust	1) TR43680 Std. 2) TR43681 Std.
--	--

Cap, Valve	N/A
------------	-----

1) Spring, Valve 2) Guide, Valve 3) O'ring, Valve	1) TR26125 2) TR28654 3) TR87627
---	--

Fuel Transfer Pump	TAR53567 (1) TRE42211 (2) TAR49771 (3)
--------------------	--

Water Pump Repair Kit	
Without Impeller	With Impeller
See Chart	

1) Injector, Pencil 2) Seal, Injector	1) TAR50781 2) TR60746 TR48000
--	--

Pump, Oil, Quad Transmission	TAR41949 For Tractors 4010,4020
------------------------------	---

> 214,999

Early Power Booster

6 Cyl

Bore: 4.25 in
108 mm

Pin Ø: 1.50 in
38 mm

Block (m):
R26070, R33180, R34340,
R40890, 40900

APPLICATIONS:

AGRICULTURAL
4010
4020

(1) ES > 82,801.
 (2) ES 82,802-422,365.
 (3) ES 422,366 >.
 (4) TRE53422 will require front key [TR116311](#) for the front damper.