

# 300 Series

Engine & Equipment  
Model

## 4039D

Liter Designated

4 Cyl

Bore: 4.19 in  
106.5 mm  
Pin Ø: 1.375 in  
35 mm

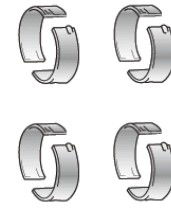
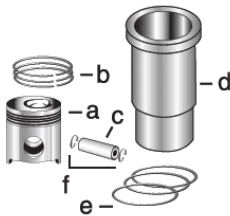
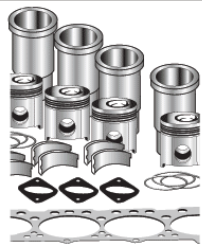
### APPLICATIONS:

#### AGRICULTURAL

5600  
(Mercosur)

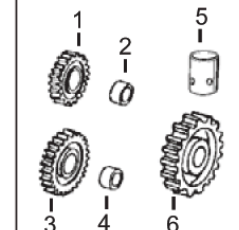
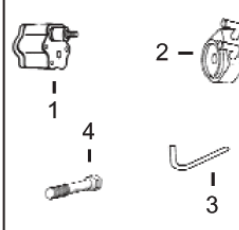
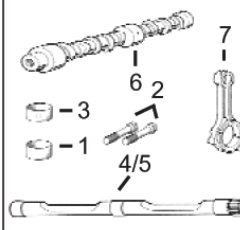
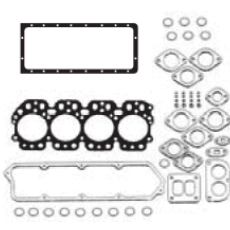
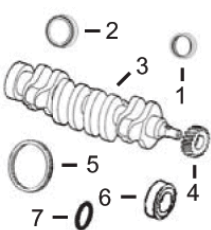
### CONSTRUCTION

70D	315C/D
210D	400G
290D	482C
310C/D	515B



1) Engine O/H Kit	Piston-Liner Kit	Main Bearing	Thrust Bearing	Con Rod Bearing
-------------------	------------------	--------------	----------------	-----------------

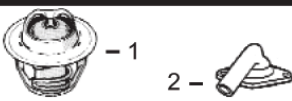
2) Engine I/F Kit	<b>TRE30250</b> Consists of: a) <a href="#">TRE19282</a> b) <a href="#">TRE66820</a> c) <a href="#">TR125754</a> d) <a href="#">TR116281</a> e) <a href="#">TAR65507</a> f) <a href="#">TM41029</a>	<a href="#">TRE27352</a> Std. <a href="#">TRE27353</a> .010 <a href="#">TRE27360</a> .020 <a href="#">TRE27368</a> .030	<a href="#">TAT21139</a> Std. <a href="#">TAT21132</a> .010 <a href="#">TAT21134</a> .020 <a href="#">TAT21136</a> .030	<a href="#">TRE27348</a> Std. <a href="#">TRE27349</a> .010 <a href="#">TRE27358</a> .020 <a href="#">TRE27364</a> .030
1) <a href="#">TAT86992</a>				
2) <a href="#">TIK86992</a>		Use 4	Use 1	Use 4



1) Front Seal 2) Rear Seal	1) O/H Gasket Set	1) Bush, Con Rod 2) Bolt, Con Rod 3) Bush, Bal. Shaft	1) Pump, Oil 2) Oil Cooler 3) Pump, Oil Tube 4) Cyl Hd Cap Screw	1) Lower Gear 2) Lower Bushing 3) Upper Gear 4) Upper Bushing 5) Cam. Follower 6) Cam. Gear
3) Crankshaft 4) Crankshaft, Gear 5) Ring Gear 6) Sleeve, Front 7) Packing, Sleeve	2) Head Gasket Set 3) Head Gasket 4) Oil Pan Gasket 5) Rocker Cover Gsk	4) Bal. Shaft R/H 5) Bal. Shaft L/H 6) Camshaft 7) Con Rod		

1) <a href="#">TAR67942</a> 2) <a href="#">TRE44574</a> 3) <a href="#">TAT18030</a> or <a href="#">TRE20585</a> 4) <a href="#">TT20094</a> 5) <a href="#">TR114282</a> (142T) 6) <a href="#">TR81989</a> 7) <a href="#">TH35244</a>	1) <a href="#">TRE501579</a> 2) <a href="#">TRE38851</a> 3) <a href="#">TR125863</a> 4) <a href="#">TR97342</a> 5) <a href="#">TR73521</a> or <a href="#">TR106796</a> (3)	1) <a href="#">TR55647</a> x4 2) <a href="#">TR80033</a> x8 3) <a href="#">TR57160</a> x6 (4) 4) <a href="#">TRE26282</a> R/H (*) 5) <a href="#">TRE26283</a> L/H (*) 6) <a href="#">TR82820</a> (8) 7) <a href="#">TRE16495</a>	1) <a href="#">TRE55343</a> (2) 2) <a href="#">TRE31929</a> 3) <a href="#">TR113752</a> 4) <a href="#">TR85363</a> x18 (1)	1) <a href="#">TAT24252</a> (6) 2) <a href="#">TT26321</a> 3) <a href="#">TAT18009</a> (6) 4) <a href="#">TT20034</a> 5) <a href="#">TT20073</a> 6) <a href="#">TT20070</a> (6)
---	--	--	---	--

Valve, Intake	Valve, Exhaust	Insert, Valve 1) Intake 2) Exhaust	1) Seal, Valve 2) Lock, Valve	1) Spring, Valve 2) Rotator, Valve
<a href="#">TR98062</a> Std. <a href="#">TR97490</a> .015	<a href="#">TR90692</a> Std. <a href="#">TR97492</a> .015	1) <a href="#">TR98063</a> Std. <a href="#">TR98335</a> O/S. 2) <a href="#">TR85687</a> Std. <a href="#">TR93910</a> O/S.	1) <a href="#">TRE31617</a> 2) <a href="#">TR91889</a>	1) <a href="#">TR26125</a> 2) <a href="#">TRE60005</a>



1) Thermostat  
2) Thermostat Cover

1) [TAR48675](#) 180° F (5)  
2) [TT23620](#)



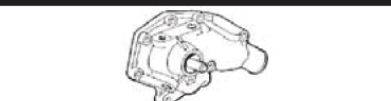
Fuel Transfer Pump

[TRE42211](#)  
[TRE38009](#) (7)



Water Pump Rep Kit  
a) Without Impeller  
b) With Impeller

a) [TRE19507](#)  
b) [TRE62658](#)



Water Pump

[TAR97708](#) (m) R73604  
[TRE60489](#) (m) R100812, (m) R127337,  
(m) R127918, (m) R55164



Injector, Pencil

[TRE36936](#)



Seal

[TR60746](#)  
[TR48000](#)

(\*) If these engines use bolt on weights shafts use [TAR69710](#) RH and [TAR69711](#) LH.  
 (1) Replace all R78558 Cap Screws with Flanged Head Cap Screw [TR85363](#).  
 (2) May use High cap. Pump, Oil [TRE65580](#).  
 (3) O'ring not included in Gasket Set. Used in Saran Engines. Order separately.  
 (4) [TR91708](#) (Outer Diam. 2.00 mm / 0.078 in ) Larger and [TR57160R](#) (Inner Diam 0.5 mm / 0.020 in ) Smaller, are also available.  
 (5) Saran engines may use [TRE64354](#).  
 (6) Helicoidal Gears.  
 (7) Saran Engines.  
 (8) Threaded Type. For Late 4039 models [TRE55901](#) Kit (Camshaft, and Tappets) is available.