

500 Series

Engine & Equipment
Model

6.531A

6 Cyl

Bore: 4.75 in
121 mm
Pin Ø: 1.875 in
47.6 mm

Con Rod (m):

R48315, R53287, R58883,
R66926

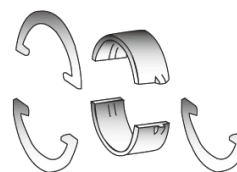
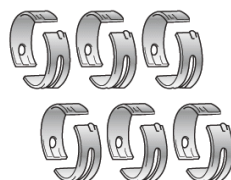
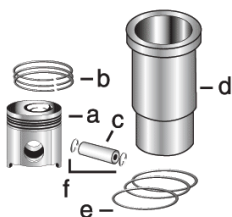
Block (m):

R48260, R72129, R80401

APPLICATIONS:

AGRICULTURAL

6030
7520



1) Engine O/H Kit

Piston-Liner Kit

Main Bearing

Thrust Bearing

Con Rod Bearing

2) Engine I/F Kit

TPLK225

Consists of:

TAR101266 Std.
TAR104568 .010
TAR104569 .020
TAR104570 .030

TAR101267 Std.
TAR104564 .010
TAR104565 .020
TAR104566 .030

TAR53020 Std.
TAR57208 .010
TAR57209 .020
TAR57210 .030

1) **TOK6225**

a) **TAR53227**

Use 6

Use 1

Use 6

2) **TIK6225**

b) **TAR53226**

c) **TR49418**

d) **TR48350**

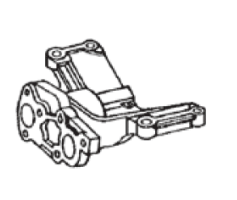
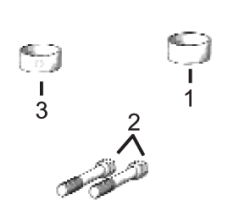
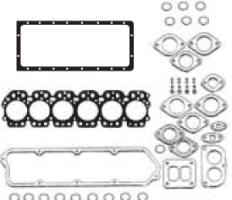
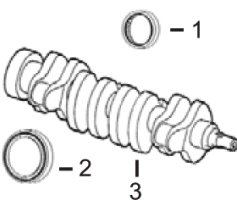
e) **TR49423**

f) **TE1343FN**

Thrust Washer

TAR89622 Std.
TAR89971 .007

Use 3, Order Qty 1



1) Front Seal
2) Rear Seal

1) O/H Gasket Set

1) Bush, Con Rod
2) Bolt, Con Rod
3) Bushing, Cam

Pump, Oil

Thermostat

3) Crankshaft

2) Head Gasket Set
3) Head Gasket
4) Oil Pan Gasket

1) **TAR49025**
2) **TRE13310**
3) **TAR92533**

1) **TRE17046**
2) **TAR56154**
3) **TR78513**
4) **TR71919**

1) **TR76783** x6
2) **TR66453** x12
3) **TR46903** x4

TRE60622 (1)

TAR48675 180° F

Valve, Intake

Valve, Exhaust

Insert, Valve
1) Intake
2) Exhaust

1) Guide, Valve
2) Lock, Valve
3) Cap, Valve

Spring, Valve
1) Outer
2) Inner
3) Rotator, Valve



TR90602 Std.

TR90601 Std.

N/A

1) **TR53192**
2) **TR35431**
3) **TR40366**

1) **TR49571**
2) **TR49569**
3) **TR81086**

(1) Crank Driven Pump.