

300 Series
Engine & Equipment
Model

6068T

Liter Designated

6 Cyl

Bore: 4.19 in
 106.5 mm
 Pin Ø: 1.62 in
 41 mm

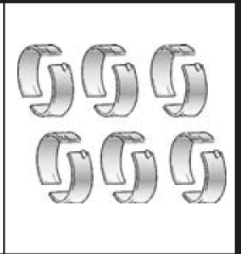
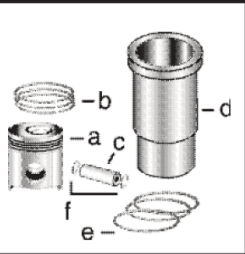
APPLICATIONS:

AGRICULTURAL

6800 7500
 6900 7600
 7400 9400
 7410

CONSTRUCTION

544B/C/D 672A/B
 624E/EH/G 690D/E
 640D 693D
 643/D 750/B
 648D 755
 648E 755A/B
 653 755BMIL
 655A/B 790E
 670A/B



1) Engine O/H Kit

Piston-Liner Kit

Main Bearing

Thrust Bearing

Con Rod Bearing

2) Engine I/F Kit

TRE53073
 Consists of:

TRE27352 Std.

TAT21139 Std.

TAR97517 Std.

1) **TOK61614**

a) **TRE48469**

TRE27353 .010

TAT21132 .010

TAR97653 .010

2) **TIK61614**

b) **TRE66820**

TRE27360 .020

TAT21134 .020

TAR97654 .020

c) **TR124230**

TRE27368 .030

TAT21136 .030

TAR97655 .030

d) **TR80500**

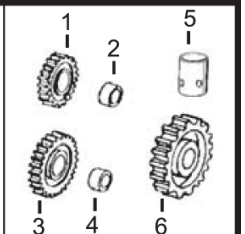
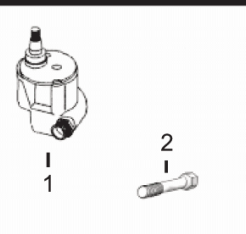
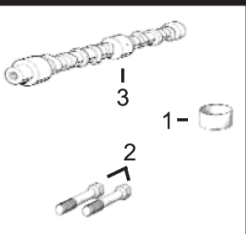
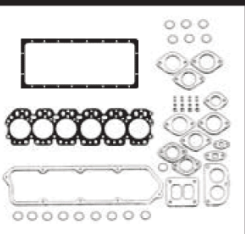
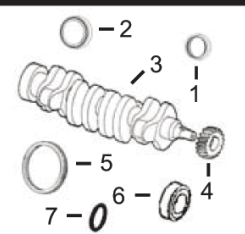
Use 6

Use 1

Use 6

e) **TAR65507**

f) **TR54114**



1) Front Seal
 2) Rear Seal

1) O/H Gasket Set

1) Bush, Con Rod
 2) Bolt, Con Rod

1) Pump, Oil
 2) Cyl Hd Cap Screw

1) Lower Gear
 2) Lower Bushing
 3) Upper Gear
 4) Upper Bushing
 5) Cam. Follower
 6) Cam. Gear

3) Crankshaft
 4) Crankshaft, Gear
 5) Ring Gear
 6) Sleeve, Front
 7) Packing, Sleeve

2) Head Gasket Set
 3) Head Gasket
 4) Oil Pan Gasket
 5) Rocker Cover Gsk

3) Camshaft

1) **TAR67942**
 2) **TRE44574**
 3) **TRE45517** (3)
 4) **TT20094**
 5) **TR28811** (129T)
 or
TR114282 (142T)
 6) **TR81989**
 7) **TH35244**

1) **TRE501580**
 2) **TRE38852**
 3) **TR114157**
 4) **TR97344**
 5) **TR75728**

1) **TR57451** x6
 2) **TR74195** x12 (5)
 3) **TR82821** (2)

1) **TRE65580**
 2) **TR85363** x26 (4)

1) **TAT24252** (1)
 2) **TT26321**
 3) **TAT18009** (1)
 4) **TT20034**
 5) **TT20073**
 6) **TT20070** (1)

Valve, Intake

Valve, Exhaust

Insert, Valve
 1) Intake
 2) Exhaust

1) Seal, Valve
 2) Lock, Valve

1) Spring, Valve
 2) Rotator, Valve

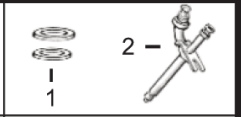
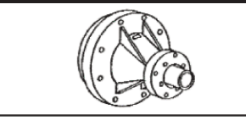
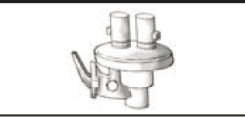
TR98062 Std.
TR97490 .015

TR90692 Std.
TR97492 .015

1) **TR98063** Std.
TR98335 O/S
 2) **TR85687** Std.
TR93910 O/S

1) **TRE31617**
 2) **TR91889**

1) **TR26125**
 2) **TRE60005**



Thermostat

Fuel Transfer Pump

Water Pump Repair Kit

Water Pump

1) Seal, Injector
 2) Injector, Pencil

TRE33705 180° F

TRE42211

Without Impeller With Impeller
 See Chart

TRE41157

1) **TR60746**
TR48000
 2) **TRE38087**

(1) Helicoidal Gears.
 (2) Threaded Type.
 (3) Crankshaft (m) R104523.
 (4) Replace all R78558 Cap Screws with Flanged Head Cap Screw **TR85363**.
 (5) When used on connecting rods marked R56187, torque bolts to 95 ft.lbs. Only.