

# 300 Series

Engine & Equipment  
Model

# 6059T

Liter Designated

6 Cyl

Bore: 4.19 in  
106.5 mm  
Pin Ø: 1.62 in  
41 mm

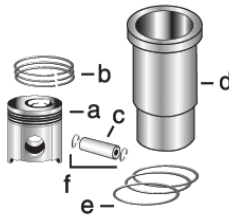
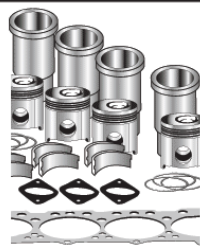
### APPLICATIONS:

#### AGRICULTURAL

3140C  
6600  
7200  
7445  
7484  
9400  
9930

### CONSTRUCTION

444D  
544G/E/EH  
570B  
710B/C



1) Engine O/H Kit

Piston-Liner Kit

Main Bearing

Thrust Bearing

Con Rod Bearing

2) Engine I/F Kit

[TRE33115](#)

Consists of:

[TRE27352](#) Std.

[TAT21139](#) Std.

[TRE27348](#) Std.

1) [TRE50783](#)

a) [TRE19278](#)

[TRE27353](#) .010

[TAT21132](#) .010

[TRE27349](#) .010

2) [TIK50783](#)

b) [TRE66820](#)

[TRE27360](#) .020

[TAT21134](#) .020

[TRE27358](#) .020

c) [TR124230](#)

[TRE27368](#) .030

[TAT21136](#) .030

[TRE27364](#) .030

d) [TR116281](#)

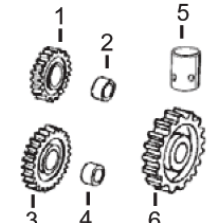
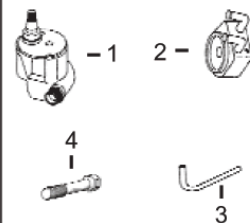
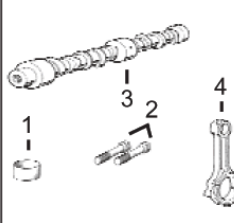
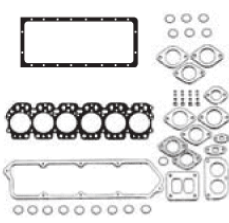
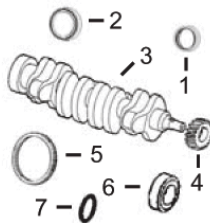
e) [TAR65507](#)

f) [TR54114](#)

Use 6

Use 1

Use 6



1) Front Seal  
2) Rear Seal

1) O/H Gasket Set

1) Bush, Con Rod  
2) Bolt, Con Rod

1) Pump, Oil  
2) Oil Cooler  
3) Pump, Oil Tube  
4) Cyl Hd Cap Screw

1) Lower Gear  
2) Lower Bushing  
3) Upper Gear  
4) Upper Bushing  
5) Cam. Follower  
6) Cam. Gear

3) Crankshaft  
4) Crankshaft, Gear  
5) Ring Gear  
6) Sleeve, Front  
7) Packing, Sleeve

2) Head Gasket Set  
3) Head Gasket  
4) Oil Pan Gasket  
5) Rocker Cover Gsk

3) Camshaft  
4) Con Rod

1) Pump, Oil  
2) Oil Cooler  
3) Pump, Oil Tube  
4) Cyl Hd Cap Screw

1) Lower Gear  
2) Lower Bushing  
3) Upper Gear  
4) Upper Bushing  
5) Cam. Follower  
6) Cam. Gear

1) [TAR67942](#)  
2) [TRE44574](#)  
3) [TAT22562](#)  
4) [TT20094](#)  
5) [TR28811](#) (129T)  
or  
[TR114282](#) (142T)  
6) [TR81989](#)  
7) [TH35244](#)

1) [TRE501580](#)  
2) [TRE38852](#)  
3) [TR114157](#)  
4) [TR97344](#)  
5) [TR75728](#)

1) [TR57451](#) x6  
2) [TR80033](#) x12  
3) [TR82821](#) (6)  
4) [TRE58347](#)

1) [TRE65580](#) (3)  
2) [TRE31929](#)  
3) [TR113752](#)  
4) [TR85363](#) x26 (1)

1) [TAT24252](#) (4)  
2) [TT26321](#)  
3) [TAT18009](#) (4)  
4) [TT20034](#)  
5) [TT20073](#)  
6) [TT20070](#) (4)



Valve, Intake

Valve, Exhaust

Insert, Valve

1) Seal, Valve  
2) Lock, Valve

1) Spring, Valve  
2) Rotator, Valve

[TR98062](#) Std.  
[TR97490](#) .015

[TR90692](#) Std.  
[TR97492](#) .015

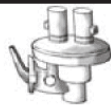
1) [TR98063](#) Std.  
[TR98335](#) O/S  
2) [TR85687](#) Std.  
[TR93910](#) O/S

1) [TRE31617](#)  
2) [TR91889](#)

1) [TR26125](#)  
2) [TRE60005](#)



Thermostat



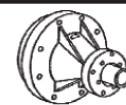
Fuel Transfer Pump



Water Pump Rep Kit  
a) Without Impeller  
b) With Impeller



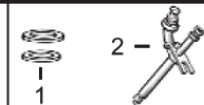
Water Pump



Water Pump



Transmission Oil Pump



1) Seal  
2) Injector, Pencil

[TAR48675](#) 180° F (2)

[TRE42211](#)  
[TRE38009](#) (5)

See Chart

[TAR97708](#)  
(m) R73604

[TRE41157](#)

[TAL120106](#)

Verify P/N for your application

1) [TR60746](#)  
[TR48000](#)  
2) [TRE38087](#)

(1) Replace all R78558 Cap Screws with Flanged Head Cap Screw [TR85363](#).  
(2) Saran engines may use [TRE64354](#).  
(3) Some Engine Models may use Standard Capacity Pump, Oil [TRE55343](#).

(4) Helicoidal Gears.  
(5) Saran Engines.  
(6) Threaded Type.