

500 Series

Engine & Equipment
Model

6.531A

6 Cyl

Bore: 4.75 in
121 mm
Pin Ø: 1.875 in
47.6 mm

Con Rod (m):

R48315, R53287, R58883,
R66926

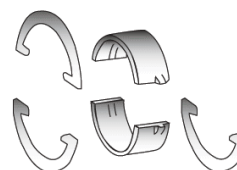
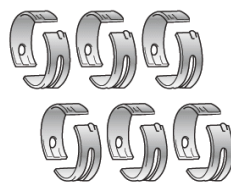
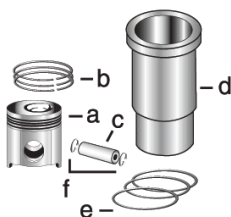
Block (m):

R48260, R72129, R80401

APPLICATIONS:

AGRICULTURAL

6030
7520



1) Engine O/H Kit

Piston-Liner Kit

Main Bearing

Thrust Bearing

Con Rod Bearing

2) Engine I/F Kit

[TPLK225](#)

Consists of:

[TAR101266](#) Std.
[TAR104568](#) .010
[TAR104569](#) .020
[TAR104570](#) .030

[TAR101267](#) Std.
[TAR104564](#) .010
[TAR104565](#) .020
[TAR104566](#) .030

[TAR53020](#) Std.
[TAR57208](#) .010
[TAR57209](#) .020
[TAR57210](#) .030

1) [TOK6225](#)

a) [TAR53227](#)

Use 6

Use 1

Use 6

2) [TIK6225](#)

b) [TAR53226](#)

c) [TR49418](#)

d) [TR48350](#)

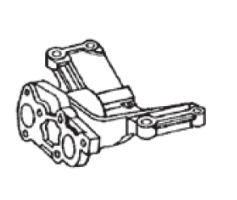
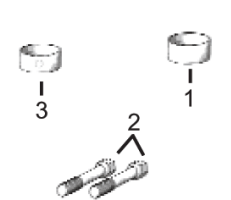
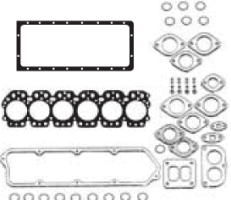
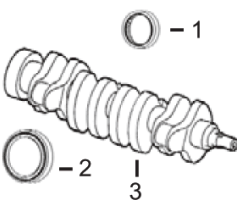
e) [TR49423](#)

f) [TE1343FN](#)

Thrust Washer

[TAR89622](#) Std.
[TAR89971](#) .007

Use 3, Order Qty 1



1) Front Seal
2) Rear Seal

1) O/H Gasket Set

1) Bush, Con Rod
2) Bolt, Con Rod
3) Bushing, Cam

Pump, Oil

Thermostat

3) Crankshaft

2) Head Gasket Set
3) Head Gasket
4) Oil Pan Gasket

1) [TAR49025](#)
2) [TRE13310](#)
3) [TAR92533](#)

1) [TRE17046](#)
2) [TAR56154](#)
3) [TR78513](#)
4) [TR71919](#)

1) [TR76783](#) x6
2) [TR66453](#) x12
3) [TR46903](#) x4

[TRE60622](#) (1)

[TAR48675](#) 180° F

Valve, Intake

Valve, Exhaust

Insert, Valve

1) Guide, Valve

Spring, Valve

1) Intake
2) Exhaust

2) Lock, Valve
3) Cap, Valve

1) Outer
2) Inner
3) Rotator, Valve



[TR90602](#) Std.

[TR90601](#) Std.

N/A

1) [TR53192](#)
2) [TR35431](#)
3) [TR40366](#)

1) [TR49571](#)
2) [TR49569](#)
3) [TR81086](#)

(1) Crank Driven Pump.