

500 Series

Engine & Equipment
Model

6.619A/T

> 033814

6 Cyl Early

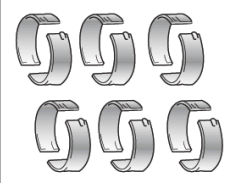
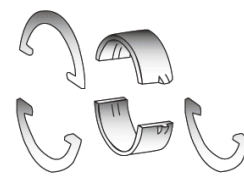
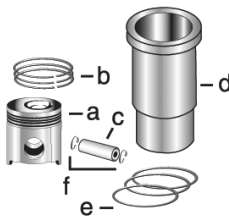
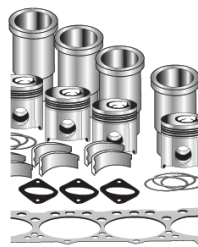
Bore: 5.125 in
130 mm
Pin Ø: 2.00 in
50.8 mm

Con Rod (m):
R66925, R57484

Block (m):
R57424

APPLICATIONS:

AGRICULTURAL
8630



1) Engine O/H Kit

Piston-Liner Kit

Main Bearing

Thrust Bearing

Con Rod Bearing

2) Engine I/F Kit

TAR84089

Consists of:

- a) [TAR69038](#)
- b) [TAR82355](#)
- c) [TR64451](#)
- d) [TR65629](#)
- e) [TAR72351](#)
- f) [TN51168](#)

- [TAR101268](#) Std.
- [TAR104122](#) .010
- [TAR104123](#) .020
- [TAR104124](#) .030

Use 6

- [TAR101269](#) Std.
- [TAR104126](#) .010
- [TAR104127](#) .020
- [TAR104128](#) .030

Use 1

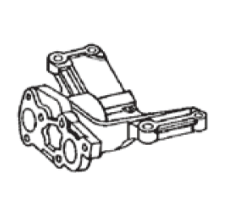
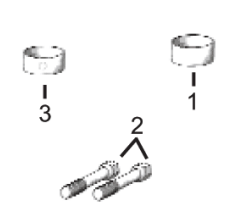
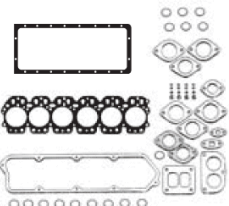
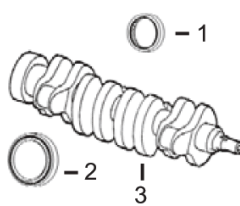
Thrust Washer

- [TAR89622](#) Std.
- [TAR89971](#) .007

Use 3, Order Qty 1

- [TAR101271](#) Std.
- [TAR104130](#) .010
- [TAR104131](#) .020
- [TAR104132](#) .030

Use 6



1) Front Seal
2) Rear Seal

1) O/H Gasket Set

1) Bush, Con Rod
2) Bolt, Con Rod
3) Bushing, Cam

Pump, Oil

Thermostat

3) Crankshaft

2) Head Gasket Set
3) Head Gasket
4) Oil Pan Gasket

- 1) [TAR49025](#)
- 2) [TRE13310](#)
- 3) [TAR92533](#)

- 1) [TRE37416](#)
- 2) [TRE37417](#)
- 3) [TRE34009](#)
- 4) [TR71919](#)

- 1) [TR60197](#) x6
- 2) [TR66453](#) x12
- 3) [TR46903](#) x4

[TRE60622](#) (1)

[TAR48675](#) 180° F



Valve, Intake

Valve, Exhaust

Insert, Valve
1) Intake
2) Exhaust

1) Guide, Valve
2) Lock, Valve
3) Cap, Valve

Spring, Valve

- 1) Outer
- 2) Inner
- 3) Rotator, Valve

[TR75690](#) Std.

[TR63982](#) Std.

- 1) [TR59894](#) Std.
- 2) [TR60537](#) Std.

- 1) [TR53192](#)
- 2) [TR35431](#)
- 3) [TR40366](#)

- 1) [TR49571](#)
- 2) [TR49569](#)
- 3) [TR81086](#)

(1) Crank Driven Pump.