

500 Series

Engine & Equipment
Model

6.619A/T

033815 - 049059

6 Cyl Mid

Bore: 5.125 in
130 mm
Pin Ø: 2.00 in
50.8 mm

Con Rod (m):
R63959

Block (m):
R74123, R72130

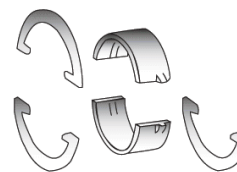
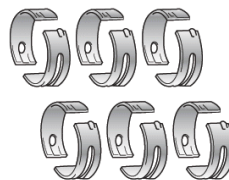
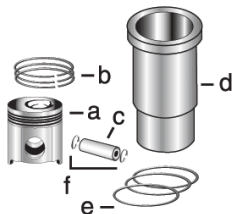
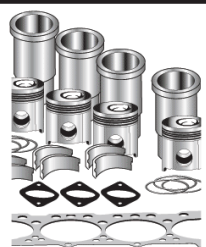
APPLICATIONS:

AGRICULTURAL

8630
8640
8650

CONSTRUCTION

762 862
850 890
855 890A
860B



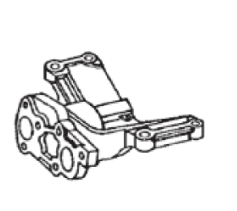
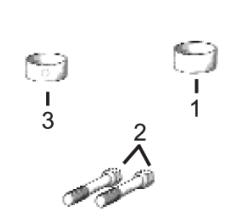
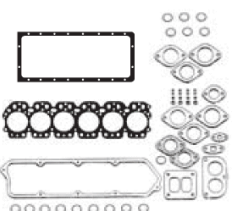
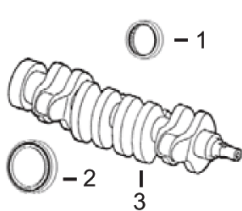
1) Engine O/H Kit	Piston-Liner Kit	Main Bearing	Thrust Bearing	Con Rod Bearing
-------------------	------------------	--------------	----------------	-----------------

2) Engine I/F Kit	TRE20291	TAR101268 Std.	TAR101269 Std.	TAR101271 Std.
-------------------	-----------------	----------------	----------------	----------------

1) TOK20291	Consists of:	TAR104122 .010	TAR104126 .010	TAR104130 .010
--------------------	--------------	----------------	----------------	----------------

2) TIK20291	a) TR20275	TAR104123 .020	TAR104127 .020	TAR104131 .020
--------------------	-------------------	----------------	----------------	----------------

	b) TAR82355	TAR104124 .030	TAR104128 .030	TAR104132 .030
	c) TR64451	Use 6	Use 1	Use 6
	d) TR65629		Thrust Washer	
	e) TAR72351		TAR89622 Std.	
	f) TN51168		TAR89971 .007	
			Use 3, Order Qty 1	



1) Front Seal 2) Rear Seal	1) O/H Gasket Set	1) Bush, Con Rod 2) Bolt, Con Rod 3) Bushing, Cam	Pump, Oil	Thermostat
-------------------------------	-------------------	---	-----------	------------

3) Crankshaft	2) Head Gasket Set 3) Head Gasket 4) Oil Pan Gasket			
---------------	---	--	--	--

1) TAR49025	1) TRE37416	1) TR69045 x6	TRE60622 (1)	TAR48675 180° F
2) TRE13310	2) TRE37417	2) TR66453 x12		
3) TAR92533	3) TRE34009	3) TR46903 x4		
	4) TR71919			

Valve, Intake	Valve, Exhaust	Insert, Valve 1) Intake 2) Exhaust	1) Guide, Valve 2) Lock, Valve 3) Cap, Valve	Spring, Valve 1) Outer 2) Inner 3) Rotator, Valve
---------------	----------------	--	--	--

TR75690 Std.	TR63982 Std.	1) TR59894 Std. 2) TR60537 Std.	1) TR53192 2) TR35431 3) TR40366	1) TR49571 2) TR49569 3) TR81086
---------------------	---------------------	--	---	---

