

500 Series

Engine & Equipment
Model

6.619 A/T

049060 >

6 Cyl Late

Bore: 5.125 in
130 mm
Pin Ø: 2.00 in
50.8 mm

Con Rod (m):
R63959

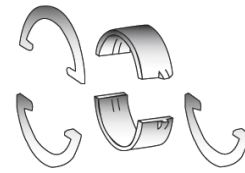
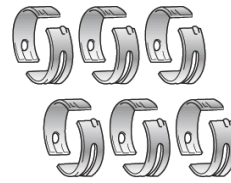
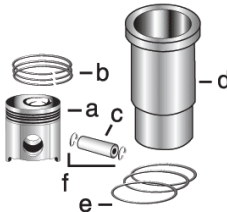
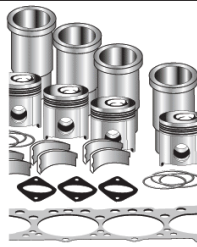
APPLICATIONS:

AGRICULTURAL

8630
8640
8650

CONSTRUCTION

744E 862
762 890
850 890A
855 992D/E
860B



1) Engine O/H Kit

Piston-Liner Kit

Main Bearing

Thrust Bearing

Con Rod Bearing

2) Engine I/F Kit

[TRE40476](#)

Consists of:

[TAR101268](#) Std.
[TAR104122](#) .010
[TAR104123](#) .020
[TAR104124](#) .030

[TAR101269](#) Std.
[TAR104126](#) .010
[TAR104127](#) .020
[TAR104128](#) .030

[TAR101271](#) Std.
[TAR104130](#) .010
[TAR104131](#) .020
[TAR104132](#) .030

1) [TOK40476](#)

- a) [TRE20275](#)
- b) [TAR82355](#)
- c) [TR64451](#)
- d) [TR77640](#)
- e) [TAR72351](#)
- f) [TN51168](#)

Use 6

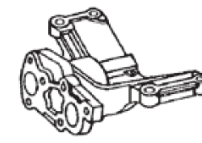
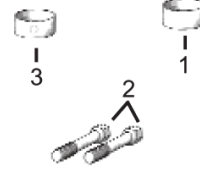
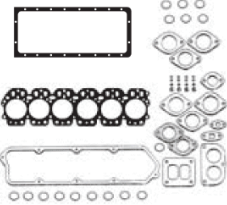
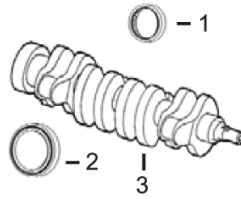
Use 1

Thrust Washer

[TAR89622](#) Std.
[TAR89971](#) .007

Use 3, Order Qty 1

Use 6



1) Front Seal
2) Rear Seal

1) O/H Gasket Set

1) Bush, Con Rod
2) Bolt, Con Rod
3) Bushing, Cam

Pump, Oil

Thermostat

3) Crankshaft

2) Head Gasket Set
3) Head Gasket
4) Oil Pan Gasket

1) [TAR49025](#)
2) [TRE13310](#)
3) [TAR92533](#)

1) [TRE37416](#)
2) [TRE37417](#)
3) [TRE34009](#)
4) [TR71919](#)

1) [TR69045](#) x6
2) [TR66453](#) x12
3) [TR46903](#) x4

[TRE60622](#) (1)

[TAR48675](#) 180° F

Valve, Intake

Valve, Exhaust

Insert, Valve
1) Intake
2) Exhaust

1) Guide, Valve
2) Lock, Valve
3) Cap, Valve

Spring, Valve
1) Outer
2) Inner
3) Rotator, Valve



[TR75690](#) Std.

[TR63982](#) Std.

1) [TR59894](#) Std.
2) [TR60537](#) Std.

1) [TR53192](#)
2) [TR35431](#)
3) [TR40366](#)

1) [TR49571](#)
2) [TR49569](#)
3) [TR81086](#)