

# 500 Series

Engine & Equipment  
Model

## 6.619 A/T

049060 >

6 Cyl Late

Bore: 5.125 in  
130 mm  
Pin Ø: 2.00 in  
50.8 mm

Con Rod (m):  
R63959

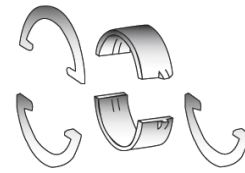
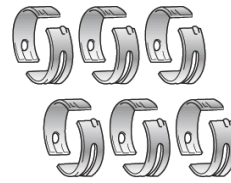
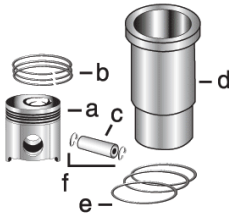
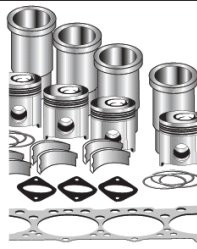
### APPLICATIONS:

#### AGRICULTURAL

8630  
8640  
8650

### CONSTRUCTION

744E 862  
762 890  
850 890A  
855 992D/E  
860B



1) Engine O/H Kit

Piston-Liner Kit

Main Bearing

Thrust Bearing

Con Rod Bearing

2) Engine I/F Kit

[TRE40476](#)

Consists of:

- a) [TRE20275](#)
- b) [TAR82355](#)
- c) [TR64451](#)
- d) [TR77640](#)
- e) [TAR72351](#)
- f) [TN51168](#)

- [TAR101268](#) Std.
- [TAR104122](#) .010
- [TAR104123](#) .020
- [TAR104124](#) .030

Use 6

- [TAR101269](#) Std.
- [TAR104126](#) .010
- [TAR104127](#) .020
- [TAR104128](#) .030

Use 1

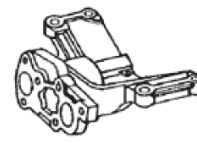
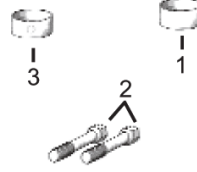
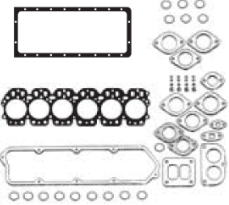
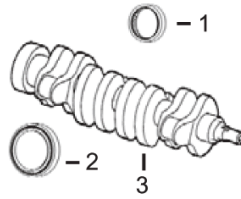
Thrust Washer

- [TAR89622](#) Std.
- [TAR89971](#) .007

Use 3, Order Qty 1

- [TAR101271](#) Std.
- [TAR104130](#) .010
- [TAR104131](#) .020
- [TAR104132](#) .030

Use 6



1) Front Seal  
2) Rear Seal

1) O/H Gasket Set

1) Bush, Con Rod  
2) Bolt, Con Rod  
3) Bushing, Cam

Pump, Oil

Thermostat

3) Crankshaft

2) Head Gasket Set  
3) Head Gasket  
4) Oil Pan Gasket

- 1) [TAR49025](#)
- 2) [TRE13310](#)
- 3) [TAR92533](#)

- 1) [TRE37416](#)
- 2) [TRE37417](#)
- 3) [TRE34009](#)
- 4) [TR71919](#)

- 1) [TR69045](#) x6
- 2) [TR66453](#) x12
- 3) [TR46903](#) x4

[TRE60622](#) (1)

[TAR48675](#) 180° F

Valve, Intake

Valve, Exhaust

Insert, Valve  
1) Intake  
2) Exhaust

1) Guide, Valve  
2) Lock, Valve  
3) Cap, Valve

Spring, Valve  
1) Outer  
2) Inner  
3) Rotator, Valve



[TR75690](#) Std.

[TR63982](#) Std.

- 1) [TR59894](#) Std.
- 2) [TR60537](#) Std.

- 1) [TR53192](#)
- 2) [TR35431](#)
- 3) [TR40366](#)

- 1) [TR49571](#)
- 2) [TR49569](#)
- 3) [TR81086](#)