

# 500 Series

Engine & Equipment  
Model

## 6.101A/T

> 499,999

6 Cyl

Bore: 5.125 in  
130 mm  
Pin Ø: 2.00 in  
50.8 mm

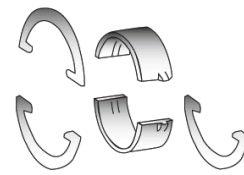
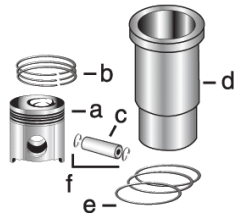
### Block (m):

R75934, R87552, R88217  
R98554

### APPLICATIONS:

### AGRICULTURAL

8760  
8870



1) Engine O/H Kit

Piston-Liner Kit

Main Bearing

Thrust Bearing

Con Rod Bearing

2) Engine I/F Kit

[TRE40476](#)

Consists of:

- a) [TRE20275](#)
- b) [TAR82355](#)
- c) [TR64451](#)
- d) [TR77640](#)
- e) [TAR72351](#)
- f) [TN51168](#)

[TAR101268](#) Std.  
[TAR104122](#) .010  
[TAR104123](#) .020  
[TAR104124](#) .030

Use 6

[TAR101269](#) Std.  
[TAR104126](#) .010  
[TAR104127](#) .020  
[TAR104128](#) .030

Use 1

#### Thrust Washer

[TAR89622](#) Std.  
[TAR89971](#) .007

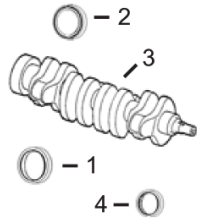
Use 3, Order Qty 1

[TAR101271](#) Std.  
[TAR104130](#) .010  
[TAR104131](#) .020  
[TAR104132](#) .030

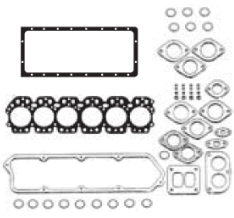
Use 6

1) [TOK40476L](#)

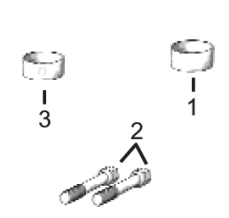
2) [TIK40476L](#)



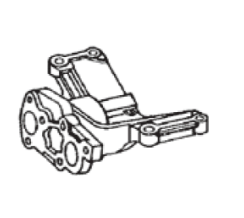
1) Front Seal  
2) Rear Seal



1) O/H Gasket Set



1) Bush, Con Rod  
2) Bolt, Con Rod  
3) Bushing, Cam



Pump, Oil



Thermostat

3) Crankshaft  
4) Rear Gear

2) Head Gasket Set  
3) Head Gasket  
4) Oil Pan Gasket

1) [TAR49025](#)  
2) [TRE13310](#)  
3) [TAR92533](#)  
4) [TR63326](#)

1) [TRE37416](#)  
2) [TRE37417](#)  
3) [TRE34009](#)  
4) [TR71919](#)

1) [TR69045](#) x6  
2) [TR66453](#) x12  
3) [TR87561](#) x4

[TRE60622](#) (1)

[TAR48675](#) 180° F

Valve, Intake

Valve, Exhaust

Insert, Valve  
1) Intake  
2) Exhaust

1) Lock, Valve  
2) Shield, Valve

1) Spring, Valve  
2) Rotator, Valve  
3) Cap, Valve

[TR101304](#)

[TR101305](#)

N/A

1) [TT20077](#)  
2) [TR102882](#) x6

1) [TR91822](#)  
2) [TRE11410](#)  
3) [TT20129](#)

